

PAX6 Polyclonal Antibody

Catalog number: 12323-1-AP

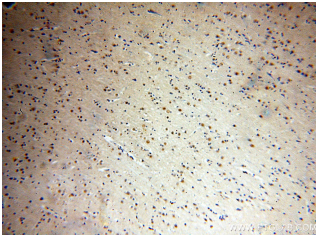
Size: 60 µg/150 µl

Source: Rabbit

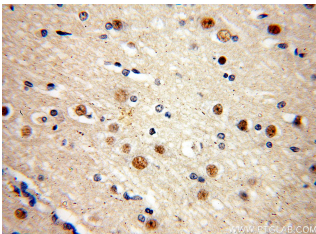
Isotype: IgG

Synonyms:

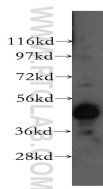
PAX6; AN, AN2, Aniridia type II protein, D11S812E, MGDA, Oculorhombin, paired box 6, Paired box protein Pax 6, PAX6, WAGR



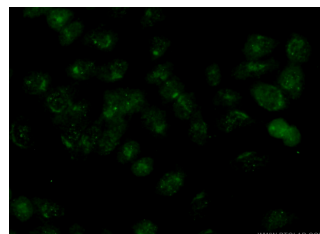
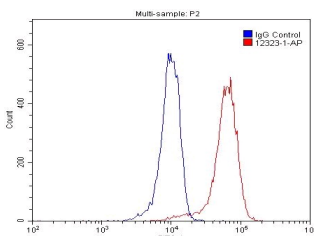
Immunohistochemical of paraffin-embedded human brain using 12323-1-AP(PAX6 antibody) at dilution of 1:50 (under 10x lens)



Immunohistochemical of paraffin-embedded human brain using 12323-1-AP(PAX6 antibody) at dilution of 1:50 (under 40x lens)



Y79 cells were subjected to SDS PAGE followed by western blot with 12323-1-AP(PAX6 antibody) at dilution of 1:500



Background

PAX6, a paired domain and homeodomain-containing transcription factor. Interaction with TRIM11 leads to ubiquitination of PAX6 and its proteasomal degradation. PAX6 is one of the earliest genes expressed in the eye field and considered a master control gene for retinal and eye development. PAX6 also regulates the development of the olfactory, central nervous systems, pituitary, and pancreas. PAX6 mutations can cause complex ocular disorders such as aniridia and Peter's anomaly.

Applications

Tested applications:	ELISA, IHC, WB, IF, FC
Cited applications:	IF, WB
Species specificity:	Human, Mouse, Rat; other species not tested.
Cited species:	Human, mouse
Calculated PAX6 MW:	46.6 kDa
Observed PAX6 MW:	47 kDa
Positive WB detected in	Y79 cells, human stomach tissue
Positive IHC detected in	Human brain tissue, human pancreas tissue
Positive IF detected in	HeLa cells
Positive FC detected in	SH-SY5Y cells
Recommended dilution:	WB: 1:200-1:2000
	IHC: 1:20-1:200
	IF: 1:50-1:500
	FC: N/A

Application key: WB = Western blotting, IHC = Immunohistochemistry, IF = Immunofluorescence, IP = Immunoprecipitation

Immunogen information

Immunogen:	Ag2984
GenBank accession number:	BC011953
Gene ID (NCBI):	5080
Full name:	Paired box 6

Product information

Purification method:	Antigen affinity purification
Storage:	PBS with 0.1% sodium azide and 50% glycerol pH 7.3. Store at -20°C.

1X10⁶ SH-SY5Y cells were stained with 0.2ug PAX6 antibody (12323-1-AP, red) and control antibody (blue). Fixed with 4% PFA blocked with 3% BSA (30 min). Alexa Fluor 488-conjugated AffiniPure Goat Anti-Rabbit IgG(H+L) with dilution 1:1500.

Immunofluorescent analysis of (-20 Ethanol) fixed HeLa cells using 12323-1-AP(PAX6 Antibody) at dilution of 1:100 and Alexa Fluor 488-conjugated AffiniPure Goat Anti-Rabbit IgG(H+L)