

## RAB27B Polyclonal Antibody

Catalog number: 13412-1-AP

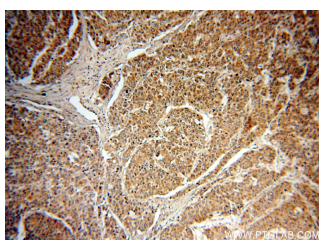
Size: 40 µg/150 µl

Source: Rabbit

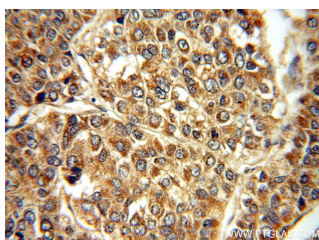
Isotype: IgG

Synonyms:

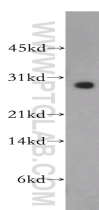
RAB27B; RAB27B, Ras related protein Rab 27B, C25KG



Immunohistochemical of paraffin-embedded human liver cancer using 13412-1-AP(RAB27B antibody) at dilution of 1:50 (under 10x lens)



Immunohistochemical of paraffin-embedded human liver cancer using 13412-1-AP(RAB27B antibody) at dilution of 1:50 (under 40x lens)



PC-3 cells were subjected to SDS PAGE followed by western blot with 13412-1-AP(RAB27B antibody) at dilution of 1:400

### Background

The Rab27 GTPase subfamily consists of two closely related homologs, Rab27a and Rab27b. Northern blot analysis revealed that Rab27b is expressed significantly only in testis, in which the predominant transcript was 1.4 kb in size. An 8-kb mRNA of unknown origin was detected in many tissues. Rab27b is associated with tubulovesicle membranes in the parietal cell and Rab27b may play a role in stimulation-associated membrane recruitment and gastric acid secretion. Rab27b is recently reported as a marker for breast cancer progression. It regulates invasive growth and metastasis in ER-positive breast cancer cell lines, and increased expression is associated with poor prognosis in humans.

### Applications

Tested applications:	ELISA, WB, IHC
Cited applications:	IHC, WB
Species specificity:	Human, Mouse, Rat; other species not tested.
Cited species:	Human
Calculated RAB27B MW:	218aa, 25 kDa
Observed RAB27B MW:	25-30 kDa
Positive WB detected in	PC-3 cells, A375 cells, DU 145 cells, MCF7 cells, rat spleen tissue
Positive IHC detected in	Human liver cancer
Recommended dilution:	WB: 1:200-1:2000 IHC: 1:20-1:200

Application key: WB = Western blotting, IHC = Immunohistochemistry, IF = Immunofluorescence, IP = Immunoprecipitation

### Immunogen information

Immunogen:	Ag4064
GenBank accession number:	BC027474
Gene ID (NCBI):	5874
Full name:	RAB27B, member RAS oncogene family

### Product information

Purification method:	Antigen affinity purification
Storage:	PBS with 0.02% sodium azide and 50% glycerol pH 7.3. Store at -20°C.