

## TOMM34 Polyclonal Antibody

Catalog number: 12196-1-AP

Size: 25 µg/150 µl

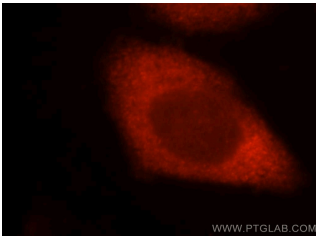
Source: Rabbit

Isotype: IgG

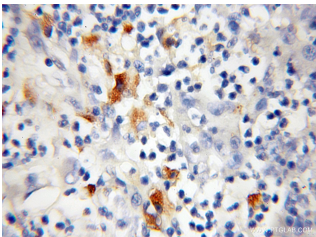
Synonyms:

TOMM34; hTom34, HTOM34P,

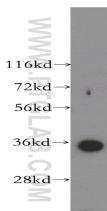
TOM34, TOMM34, URCC3



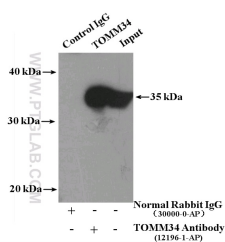
Immunofluorescent analysis of MCF-7 cells, using TOMM34 antibody 12196-1-AP at 1:25 dilution and Rhodamine-labeled goat anti-rabbit IgG (red).



Immunohistochemical of paraffin-embedded human colon cancer using 12196-1-AP(TOMM34 antibody) at dilution of 1:100 (under 10x lens)



PC-3 cells were subjected to SDS PAGE followed by western blot with 12196-1-AP(TOMM34 antibody) at dilution of 1:400



IP Result of anti-TOMM34

(IP:12196-1-AP, 4ug;

Detection:12196-1-AP 1:300)

### Applications

Tested applications:	ELISA, WB, IHC, IF, IP
Species specificity:	Human, Mouse, Rat; other species not tested.
Calculated TOMM34 MW:	309aa, 35 kDa
Observed TOMM34 MW:	35 kDa
Positive WB detected in	PC-3 cells, A375 cells, HeLa cells, human brain tissue, human kidney tissue, mouse testis tissue
Positive IP detected in	HeLa cells
Positive IHC detected in	Human colon cancer tissue
Positive IF detected in	MCF-7 cells
Recommended dilution:	WB: 1:1000-1:10000 IP: 1:200-1:1000 IHC: 1:20-1:200 IF: 1:10-1:100

Application key: WB = Western blotting, IHC = Immunohistochemistry, IF = Immunofluorescence, IP = Immunoprecipitation

### Immunogen information

Immunogen:	Ag2834
GenBank accession number:	BC014907
Gene ID (NCBI):	10953
Full name:	Translocase of outer mitochondrial membrane 34

### Product information

Purification method:	Antigen affinity purification
Storage:	PBS with 0.1% sodium azide and 50% glycerol pH 7.3. Store at -20°C.

with HeLa cells lysate 4000ug.