

ITM2A Polyclonal Antibody

Catalog number: 14407-1-AP

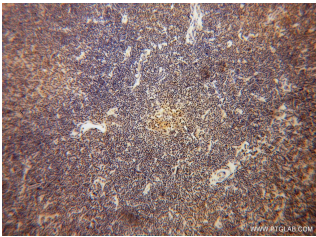
Size: 53 µg/150 µl

Source: Rabbit

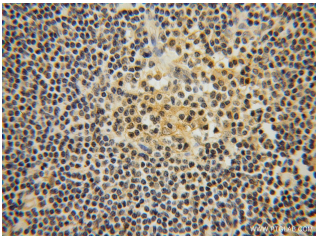
Isotype: IgG

Synonyms:

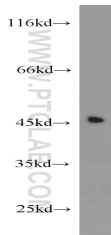
ITM2A; BRICD2A, E25A,
integral membrane protein 2A,
ITM2A, Protein E25



Immunohistochemical of paraffin-embedded human lymphoma using 14407-1-AP(ITM2A antibody) at dilution of 1:50 (under 10x lens)



Immunohistochemical of paraffin-embedded human lymphoma using 14407-1-AP(ITM2A antibody) at dilution of 1:50 (under 40x lens)



Jurkat cells were subjected to SDS PAGE followed by western blot with 14407-1-AP(ITM2A antibody) at dilution of 1:1000

Background

Integral membrane protein 2A (ITM2A) is a single-pass type II membrane protein belonging to a family, which is composed of at least two other members ITM2B and ITM2C. ITM2A can be induced during thymocyte selection and T cell activation. In early stages of differentiation ITM2A may be associated with an inhibition of the initiation of chondrogenesis.

Applications

Tested applications:	ELISA, WB, IHC
Species specificity:	Human, Mouse, Rat; other species not tested.
Calculated ITM2A MW:	30kd
Observed ITM2A MW:	45-48kd, 30kd
Positive WB detected in	Jurkat cells, HepG2 cells, mouse lung tissue
Positive IHC detected in	Human lymphoma tissue
Recommended dilution:	WB: 1:500-1:5000 IHC: 1:20-1:200

Application key: WB = Western blotting, IHC = Immunohistochemistry, IF = Immunofluorescence, IP = Immunoprecipitation

Immunogen information

Immunogen:	Ag5692
GenBank accession number:	BC040437
Gene ID (NCBI):	9452
Full name:	Integral membrane protein 2A

Product information

Purification method:	Antigen affinity purification
Storage:	PBS with 0.02% sodium azide and 50% glycerol pH 7.3. Store at -20°C.