

PACSIN1 Polyclonal Antibody

Catalog number: 13219-1-AP

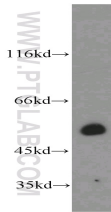
Size: 59 µg/150 µl

Source: Rabbit

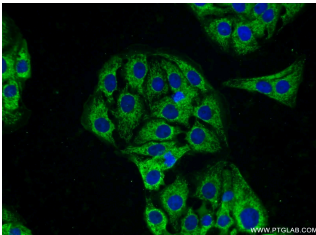
Isotype: IgG

Synonyms:

PACSIN1; KIAA1379, PACSIN1, SDPI



mouse cerebellum tissue were subjected to SDS PAGE followed by western blot with 13219-1-AP(PACSIN1 antibody) at dilution of 1:100



Immunofluorescent analysis of SH-SY5Y cells using 13219-1-AP(PACSIN1 Antibody) at dilution of 1:50 and Alexa Fluor 488-conjugated AffiniPure Goat Anti-Rabbit IgG(H+L)

Applications

Tested applications:	ELISA, WB, IF
Species specificity:	Human,Mouse,Rat; other species not tested.
Calculated PACSIN1 MW:	444aa,51 kDa
Observed PACSIN1 MW:	48-51kd
Positive WB detected in	Mouse cerebellum tissue, mouse brain tissue
Positive IF detected in	SH-SY5Y cells
Recommended dilution:	WB: 1:200-1:1000 IF: 1:20-1:200

Application key: WB = Western blotting, IHC = Immunohistochemistry, IF = Immunofluorescence, IP = Immunoprecipitation

Immunogen information

Immunogen:	Ag4102
GenBank accession number:	BC040228
Gene ID (NCBI):	29993
Full name:	Protein kinase C and casein kinase substrate in neurons 1

Product information

Purification method:	Antigen affinity purification
Storage:	PBS with 0.02% sodium azide and 50% glycerol pH 7.3. Store at -20°C.