

VWF, VWFpp Polyclonal Antibody

Catalog number: 11778-1-AP

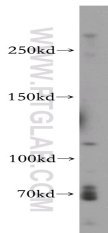
Size: 20 µg/150 µl

Source: Rabbit

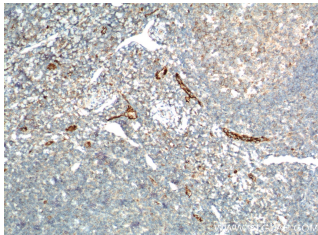
Isotype: IgG

Synonyms:

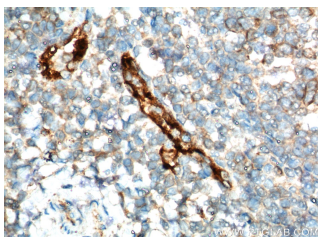
VWF; F8VWF, von Willebrand antigen II, von Willebrand factor, VWD, VWF



Jurkat cells were subjected to SDS PAGE followed by western blot with 11778-1-AP (VWF, VWFpp antibody) at dilution of 1:500



Immunohistochemistry of paraffin-embedded human tonsillitis tissue slide using 11778-1-AP (VWF, VWFpp Antibody) at dilution of 1:200 (under 10x lens).



Immunohistochemistry of paraffin-embedded human tonsillitis tissue slide using 11778-1-AP (VWF, VWFpp Antibody) at dilution of 1:200 (under 40x lens).

Background

Von Willebrand factor (vWF) is a large multimeric glycoprotein that is crucial to the hemostasis process. It supports platelet adhesion and carries factor VIII (FVIII). Deficiency of vWF results in von Willebrand disease (vWD), a common inherited bleeding disorder. The pre-pro-vWF is comprised of 2,813 amino acids (aa) which encompass a 22-aa signal peptide, a 741-aa large propeptide (vWF propeptide, vWFpp, also called von Willebrand antigen II) and 2,050 aa making up the mature vWF. The von Willebrand antigen 2 is required for multimerization of vWF and for its targeting to storage granules. This antibody raised against the N-terminal region (residues 56-256 aa) of pre-pro-vWF recognizes von Willebrand antigen 2 (75-83 kDa) and pro-vWF (309-320 kDa). (PMID: 9759493; 12067899; 22452980; 8874191)

Applications

Tested applications:	ELISA, WB, IHC
Cited applications:	IF, IHC
Species specificity:	Human, Mouse, Rat; other species not tested.
Cited species:	Human, mouse, pig, rat
Calculated VWF, VWFpp MW:	309 kDa
Observed VWF, VWFpp MW:	309-320 kDa, 75-83 kDa
Positive WB detected in	Jurkat cells, mouse spleen tissue
Positive IHC detected in	Human tonsillitis tissue, human brain tissue, human epididymis tissue, human heart tissue, human liver tissue, human lung tissue, human ovary tissue, human placenta tissue, human skin tissue, human spleen tissue
Recommended dilution:	WB: 1:200-1:2000 IHC: 1:50-1:500

Application key: WB = Western blotting, IHC = Immunohistochemistry, IF = Immunofluorescence, IP = Immunoprecipitation

Immunogen information

Immunogen:	Ag2386
GenBank accession number:	.
Gene ID (NCBI):	7450
Full name:	Von Willebrand factor

Product information

Purification method:	Antigen affinity purification
Storage:	PBS with 0.02% sodium azide and 50% glycerol pH 7.3. Store at -20°C.