

## Collagen Type XXIII Polyclonal Antibody

Catalog number: 14337-1-AP

Size: 22 µg/150 µl

Source: Rabbit

Isotype: IgG

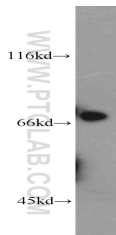
Synonyms:

COL23A1; COL23A1, Collagen

alpha 1(XXIII) chain, Collagen

Type XXIII, collagen, type XXIII,

alpha 1, DKFZp434K0621



mouse thymus tissue were subjected to SDS PAGE followed by western blot with 14337-1-AP(COL23A1 antibody) at dilution of 1:800

### Applications

Tested applications:	ELISA, WB
Species specificity:	Human,Mouse,Rat; other species not tested.
Calculated Collagen Type XXIII MW:	52 kDa
Observed Collagen Type XXIII MW:	68-75kd
Positive WB detected in	Mouse thymus tissue
Recommended dilution:	WB: 1:200-1:2000

Application key: WB = Western blotting, IHC = Immunohistochemistry, IF = Immunofluorescence, IP = Immunoprecipitation

### Immunogen information

Immunogen:	Ag5640
GenBank accession number:	BC042428
Gene ID (NCBI):	91522
Full name:	Collagen, type XXIII, alpha 1

### Product information

Purification method:	Antigen affinity purification
Storage:	PBS with 0.02% sodium azide and 50% glycerol pH 7.3. Store at -20°C.