

SLC25A13 Polyclonal Antibody

Catalog number: 10789-1-AP

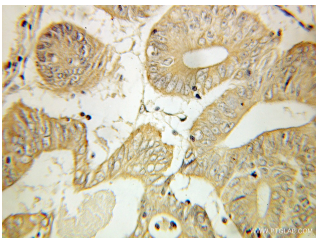
Size: 20 µg/150 µl

Source: Rabbit

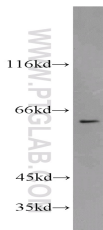
Isotype: IgG

Synonyms:

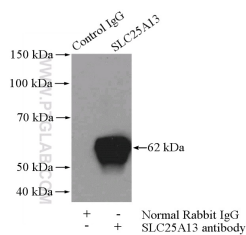
SLC25A13; ARALAR2, CITRIN, CTLN2, SLC25A13



Immunohistochemical of paraffin-embedded human colon cancer using 10789-1-AP(SLC25A13 antibody) at dilution of 1:100 (under 10x lens)



Raji cells were subjected to SDS PAGE followed by western blot with 10789-1-AP(SLC25A13 antibody) at dilution of 1:800



IP Result of anti-SLC25A13 (IP:10789-1-AP, 4ug; Detection:10789-1-AP 1:1000) with mouse kidney tissue lysate 4000ug.

Background

SLC25A13, also known as citrin, has been identified as a mitochondrial aspartate-glutamate carrier protein and may be implicated in metabolic compartmentation. It consists of 675 amino acid residues and harbors four EF-hands and six mitochondrial transmembranous (TM) spanners. Mutations in SLC25A13 gene cause adult-onset type II citrullinemia (CTLN2) and neonatal intrahepatic cholestasis (NICCD). The complete deletion or cleaved SLA25A13 proteins have been reported in patients with SLC25A13 mutation.

Applications

Tested applications:	ELISA, WB, IHC, IP
Species specificity:	Human,Mouse,Rat; other species not tested.
Calculated SLC25A13 MW:	74 kDa
Observed SLC25A13 MW:	60-63kd
Positive WB detected in	Raji cells, A431 cells, HEK-293 cells, mouse kidney tissue, mouse liver tissue
Positive IP detected in	Mouse kidney tissue
Positive IHC detected in	Human colon cancer tissue
Recommended dilution:	WB: 1:200-1:2000 IP: 1:500-1:5000 IHC: 1:20-1:200

Application key: WB = Western blotting, IHC = Immunohistochemistry, IF = Immunofluorescence, IP = Immunoprecipitation

Immunogen information

Immunogen:	Ag1242
GenBank accession number:	BC006566
Gene ID (NCBI):	10165
Full name:	Solute carrier family 25, member 13 (citrin)

Product information

Purification method:	Antigen affinity purification
Storage:	PBS with 0.1% sodium azide and 50% glycerol pH 7.3. Store at -20°C.