

LCOR Polyclonal Antibody

Catalog number: 14476-1-AP

Size: 20 µg/150 µl

Source: Rabbit

Isotype: IgG

Synonyms:

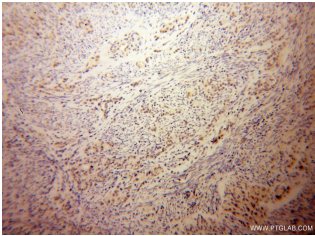
LCOR; FLJ38026, KIAA1795,

LCOR, Ligand dependent

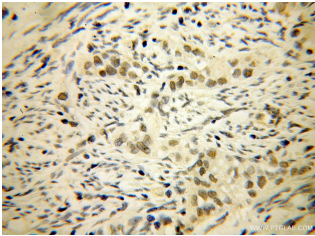
corepressor, Mblk1 related

protein 2, MLR2, RP11

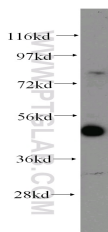
175O19.1



Immunohistochemical of paraffin-embedded human endometrial cancer using 14476-1-AP (LCOR antibody) at dilution of 1:50 (under 10x lens)



Immunohistochemical of paraffin-embedded human endometrial cancer using 14476-1-AP (LCOR antibody) at dilution of 1:50 (under 40x lens)



HeLa cells were subjected to SDS PAGE followed by western blot with 14476-1-AP (LCOR antibody) at dilution of 1:300

Background

LCOR is a transcriptional corepressor widely expressed in fetal and adult tissues that is recruited to agonist-bound nuclear receptors through a single LxxLL motif, also referred to as a nuclear receptor (NR) box [PMID:12535528]. It functions through recruitment of C-terminal binding proteins (CtBPs) and histone deacetylases (HDACs) to its N-terminal and central domains, respectively [PMID:22277651]. It is a scaffold for both histone deacetylases (HDACs) and C-terminal binding protein (CtBP) corepressors and functions by both HDAC-dependent and -independent mechanisms in a receptor-specific manner [PMID:19744932].

Applications

Tested applications:	ELISA, WB, IHC, IF
Species specificity:	Human, Mouse, Rat; other species not tested.
Calculated LCOR MW:	47 kDa
Observed LCOR MW:	50 kDa
Positive WB detected in	HeLa cells
Positive IHC detected in	Human endometrial cancer tissue
Positive IF detected in	HeLa cells
Recommended dilution:	WB: 1:200-1:1000
	IHC: 1:20-1:200
	IF: 1:50-1:500

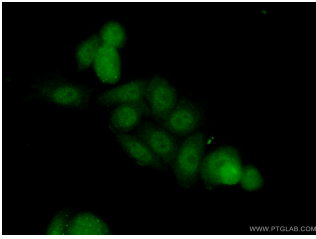
Application key: WB = Western blotting, IHC = Immunohistochemistry, IF = Immunofluorescence, IP = Immunoprecipitation

Immunogen information

Immunogen:	Ag5851
GenBank accession number:	BC053359
Gene ID (NCBI):	84458
Full name:	Ligand dependent nuclear receptor corepressor

Product information

Purification method:	Antigen affinity purification
Storage:	PBS with 0.02% sodium azide and 50% glycerol pH 7.3. Store at -20°C.



**Immunofluorescent analysis
of (10% Formaldehyde) fixed
HeLa cells using 14476-1-AP(LCOR Antibody) at dilution of
1:50 and Alexa Fluor 488-
conjugated AffiniPure Goat
Anti-Rabbit IgG(H+L)**