

ITFG1 Polyclonal Antibody

Catalog number: 11731-1-AP

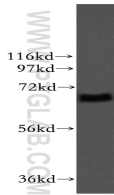
Size: 20 µg/150 µl

Source: Rabbit

Isotype: IgG

Synonyms:

ITFG1; CDA08; TIP



mouse testis tissue were subjected to SDS PAGE followed by western blot with 11731-1-AP(ITFG1 Antibody) at dilution of 1:2000

Applications

Tested applications:	ELISA, WB
Species specificity:	Human, mouse, rat; other species not tested.
Positive WB detected in:	Mouse testis tissue
Calculated ITFG1 MW:	612aa,68kd
Observed ITFG1 MW:	68kd
Recommended dilution:	WB: 1:1000-1:10000

Application key: WB = Western blotting, IHC = Immunohistochemistry, IF = Immunofluorescence, IP = Immunoprecipitation, FC = Flow cytometry

Immunogen information

Immunogen:	Ag2331
GenBank accession number:	BC024162
Gene ID (NCBI):	81533
Full name:	Integrin alpha FG-GAP repeat containing 1

Product information

Purification method:	Antigen affinity purification
Storage:	PBS with 0.1% sodium azide and 50% glycerol pH 7.3. Store at -20°C.