

KIF2B Polyclonal Antibody

Catalog number: 13711-1-AP

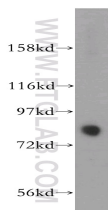
Size: 32 µg/150 µl

Source: Rabbit

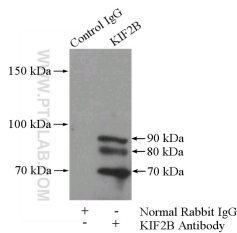
Isotype: IgG

Synonyms:

KIF2B; FLJ53902, KIF2B, kinesin family member 2B, Kinesin like protein KIF2B



mouse brain tissue were subjected to SDS PAGE followed by western blot with 13711-1-AP(KIF2B antibody) at dilution of 1:1000



IP Result of anti-KIF2B (IP:13711-1-AP, 4µg; Detection:13711-1-AP 1:1000) with mouse testis tissue lysate 4000µg.

Applications

Tested applications:	ELISA, WB, IP
Species specificity:	Human, Mouse, Rat; other species not tested.
Calculated KIF2B MW:	673aa, 76 kDa
Observed KIF2B MW:	80 kDa
Positive WB detected in	Mouse brain tissue, mouse testis tissue
Positive IP detected in	Mouse testis tissue
Recommended dilution:	WB: 1:500-1:5000 IP: 1:500-1:5000

Application key: WB = Western blotting, IHC = Immunohistochemistry, IF = Immunofluorescence, IP = Immunoprecipitation

Immunogen information

Immunogen:	Ag4648
GenBank accession number:	BC033802
Gene ID (NCBI):	84643
Full name:	Kinesin family member 2B

Product information

Purification method:	Antigen affinity purification
Storage:	PBS with 0.02% sodium azide and 50% glycerol pH 7.3. Store at -20°C.