

BCKDHB Polyclonal Antibody

Catalog number: 13685-1-AP

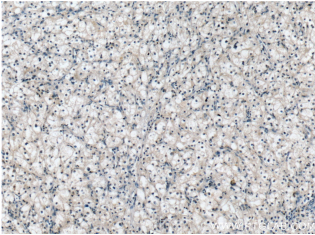
Size: 29 µg/150 µl

Source: Rabbit

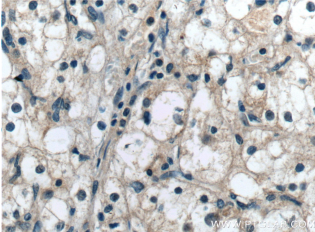
Isotype: IgG

Synonyms:

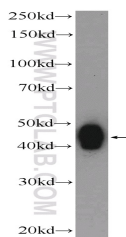
BCKDHB; BCKDHB, DJ279A18.1, E1B, FLJ17880



Immunohistochemistry of paraffin-embedded human renal cell carcinoma tissue slide using 13685-1-AP (BCKDHB Antibody) at dilution of 1:50 (under 10x lens)



Immunohistochemistry of paraffin-embedded human renal cell carcinoma tissue slide using 13685-1-AP (BCKDHB Antibody) at dilution of 1:50 (under 40x lens)



HEK-293 cells were subjected to SDS PAGE followed by western blot with 13685-1-AP (BCKDHB Antibody) at dilution of 1:600

Applications

Tested applications:	ELISA, WB, IHC
Species specificity:	Human, Mouse, Rat; other species not tested.
Calculated BCKDHB MW:	392aa, 43 kDa
Observed BCKDHB MW:	43 kDa
Positive WB detected in	HEK-293 cells, Transfected HEK-293 cells
Positive IHC detected in	Human renal cell carcinoma tissue, human liver cancer tissue
Recommended dilution:	WB: 1:200-1:2000 IHC: 1:20-1:200

Application key: WB = Western blotting, IHC = Immunohistochemistry, IF = Immunofluorescence, IP = Immunoprecipitation

Immunogen information

Immunogen:	Ag4552
GenBank accession number:	BC040139
Gene ID (NCBI):	594
Full name:	Branched chain keto acid dehydrogenase E1, beta polypeptide

Product information

Purification method:	Antigen affinity purification
Storage:	PBS with 0.1% sodium azide and 50% glycerol pH 7.3. Store at -20°C.