

## PSG4 Polyclonal Antibody

Catalog number: 10902-2-AP

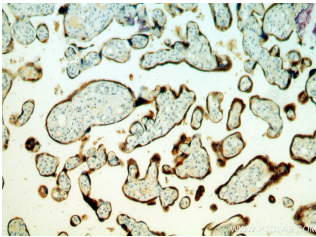
Size: 20 µg/150 µl

Source: Rabbit

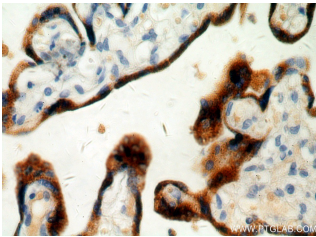
Isotype: IgG

Synonyms:

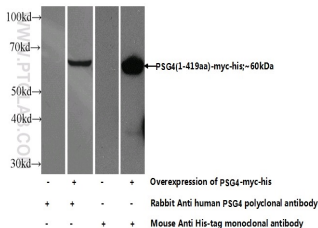
PSG4; CGM4, CGM4, PSG9, PS beta G 4, PS beta G 9, PSBG 4, PSBG 9, PSG4, PSG9



Immunohistochemical of paraffin-embedded human placenta using 10902-2-AP (PSG4 antibody) at dilution of 1:50 (under 10x lens)



Immunohistochemical of paraffin-embedded human placenta using 10902-2-AP (PSG4 antibody) at dilution of 1:50 (under 40x lens)



Transfected HEK-293 cells were subjected to SDS PAGE followed by western blot with 10902-2-AP (PSG4 Antibody) at dilution of 1:700

### Applications

Tested applications:	ELISA, IHC, WB
Species specificity:	Human; other species not tested.
Calculated PSG4 MW:	47kd
Observed PSG4 MW:	
Positive WB detected in	Transfected HEK-293 cells
Positive IHC detected in	Human placenta tissue
Recommended dilution:	WB: 1:200-1:2000
	IHC: 1:20-1:200

Application key: WB = Western blotting, IHC = Immunohistochemistry, IF = Immunofluorescence, IP = Immunoprecipitation

### Immunogen information

Immunogen:	Ag1167
GenBank accession number:	BC008405
Gene ID (NCBI):	5672
Full name:	Pregnancy specific beta-1-glycoprotein 4

### Product information

Purification method:	Antigen affinity purification
Storage:	PBS with 0.1% sodium azide and 50% glycerol pH 7.3. Store at -20°C.