

PPP1CB-Specific Polyclonal Antibody

Catalog number: 10140-2-AP

Size: 30 µg/150 µl

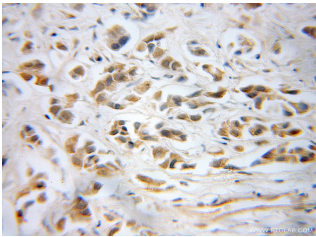
Source: Rabbit

Isotype: IgG

Synonyms:

PPP1CB; PP1 Beta, PP 1B,

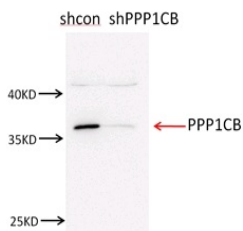
PPP1CB, PPP1CD



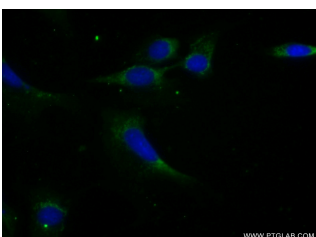
Immunohistochemical of paraffin-embedded human prostate cancer using 10140-2-AP(PPP1CB antibody) at dilution of 1:50 (under 40x lens)



human brain tissue were subjected to SDS PAGE followed by western blot with 10140-2-AP(PPP1CB antibody) at dilution of 1:1500



NIH3T3 cells were subjected to SDS PAGE followed by western blot with 10140-2-AP(PPP1CB antibody) at dilution of 1:1500



Immunofluorescent analysis

Background

Protein phosphatase 1 (PP1) is the main eukaryotic protein serine/threonine phosphatase that regulates an enormous variety of cellular processes including protein-protein interactions, gene transcription, cell-cycle progression and apoptosis. It is a trimeric complex composed of a regulatory subunit, a variable subunit and a catalytic subunit. The catalytic subunit of PP1 (PP1c) can interact with amount of regulatory subunits in vivo that target it to particular subcellular locations and regulate its activity towards specific substrates. PPP1CB migrated as a 37kd protein on SDS page. This antibody is specific to PPP1CB.

Applications

| | |
|--------------------------------|---|
| Tested applications: | ELISA, WB, IHC, IP, IF |
| Cited applications: | IHC, IP, WB |
| Species specificity: | Human, Mouse, Rat; other species not tested. |
| Cited species: | Human, rat |
| Calculated PPP1CB-Specific MW: | 37 kDa |
| Observed PPP1CB-Specific MW: | 37 kDa |
| Positive WB detected in | Human brain tissue, NIH/3T3 |
| Positive IP detected in | Mouse brain tissue |
| Positive IHC detected in | Human prostate cancer tissue |
| Positive IF detected in | NIH/3T3 cells |
| Recommended dilution: | WB: 1:500-1:5000 IP: 1:500-1:5000 IHC: 1:20-1:200 IF: 1:20-1:200 |

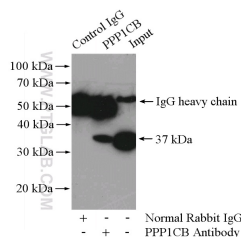
Application key: WB = Western blotting, IHC = Immunohistochemistry, IF = Immunofluorescence, IP = Immunoprecipitation

Immunogen information

| | |
|---------------------------|--|
| Immunogen: | Ag0183 |
| GenBank accession number: | BC002697 |
| Gene ID (NCBI): | 5500 |
| Full name: | Protein phosphatase 1, catalytic subunit, beta isoform |

Product information

| | |
|----------------------|---|
| Purification method: | Antigen affinity purification |
| Storage: | PBS with 0.1% sodium azide and 50% glycerol pH 7.3. Store at -20°C. |



IP Result of anti-PPP1CB

of (-20% Ethanol) fixed (IP:10140-2-AP, 4ug;
NIH/3T3 cells using 10140-2- AP(PPP1CB Antibody) at Detection:10140-2-AP 1:1000)
dilution of 1:50 and Alexa with mouse brain tissue lysate
Fluor 488-conjugated 4000ug.
AffiniPure Goat Anti-Rabbit
IgG(H+L)