

ribosomal protein L4 Polyclonal Antibody

Catalog number: 11302-1-AP

Size: 27 µg/150 µl

Source: Rabbit

Isotype: IgG

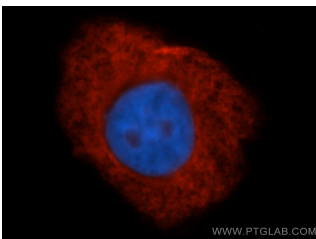
Synonyms:

RPL4; 60S ribosomal protein L1,

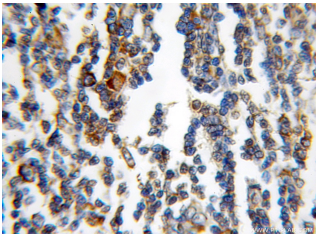
60S ribosomal protein L4,

ribosomal protein L4, RPL1,

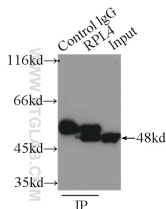
RPL4



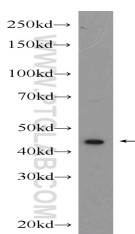
Immunofluorescent analysis of HepG2 cells, using RPL4 antibody 11302-1-AP at 1:50 dilution and Rhodamine-labeled goat anti-rabbit IgG (red). Blue pseudocolor = DAPI (fluorescent DNA dye).



Immunohistochemical of paraffin-embedded human lymphoma using 11302-1-AP(RPL4 antibody) at dilution of 1:100 (under 10x lens)



IP Result of anti-RPL4 (IP:11302-1-AP, 3µg; Detection:11302-1-AP 1:800) with K-562 cells lysate 6000µg.



rat brain tissue were

Background

60S ribosomal protein L4 is encoded by RPL4 (or RPL1) gene. RPL4 is a component of 60S subunit of ribosome, and belongs to the L4E family. By interacting with c-Myb, RPL4 plays a important role in c-myc expression in response to growth factor and nutritional signals. Recently RPL4 was reported to be able to increase eefficiency of viral recoding sequence.

Applications

Tested applications: ELISA, IHC, IF, IP, WB

Cited applications: WB

Species specificity: Human, Mouse, Rat; other species not tested.

Cited species: Arabidopsis, human, Plant

Calculated ribosomal protein 48 kDa

L4 MW:

Observed ribosomal protein 48kd

L4 MW:

Positive WB detected in Rat brain tissue, A375 cells, HeLa cells, human skeletal muscle tissue, K-562 cells, mouse skeletal muscle tissue, rat skeletal muscle tissue, U-937 cells

Positive IP detected in K-562 cells

Positive IHC detected in Human lymphoma tissue

Positive IF detected in HepG2 cells

Recommended dilution: WB: 1:500-1:5000

IP: 1:200-1:2000

IHC: 1:20-1:200

IF: 1:20-1:200

Application key: WB = Western blotting, IHC = Immunohistochemistry, IF = Immunofluorescence, IP = Immunoprecipitation

Immunogen information

Immunogen: Ag1828

GenBank accession number: BC009888

Gene ID (NCBI): 6124

Full name: Ribosomal protein L4

Product information

Purification method: Antigen affinity purification

Storage: PBS with 0.1% sodium azide and 50% glycerol pH 7.3. Store at -20°C.

subjected to SDS PAGE
followed by western blot with
11302-1-AP(RPL4 Antibody)
at dilution of 1:1000