

CBX1 Polyclonal Antibody

Catalog number: 10241-2-AP

Size: 38 µg/150 µl

Source: Rabbit

Isotype: IgG

Synonyms:

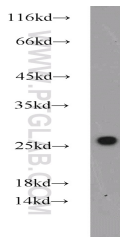
CBX1; CBX, CBX1, Chromobox protein homolog 1,

Heterochromatin protein p25,

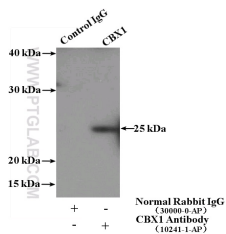
HP1 BETA, HP1Hs beta,

HP1Hsbeta, M31, MOD1,

Modifier 1 protein, p25beta



HEK-293 cells were subjected to SDS PAGE followed by western blot with 10241-2-AP (CBX1 antibody) at dilution of 1:1000



IP Result of anti-CBX1 (IP:10241-2-AP, 3µg; Detection:10241-2-AP 1:500) with HEK-293 cells lysate 1480µg.

Background

One function of heterochromatin is the epigenetic silencing by sequestration of genes into transcriptionally repressed nuclear neighborhoods. Heterochromatin protein 1 (HP1) is a major component of heterochromatin and is a candidate for establishing and mediating gene silencing. This protein is expressed in all adult and embryonic tissues, as a homodimer.

Applications

Tested applications:	ELISA, WB, IP
Cited applications:	IF, IHC, WB
Species specificity:	Human, Mouse, Rat; other species not tested.
Cited species:	Human
Calculated CBX1 MW:	27 kDa
Observed CBX1 MW:	25 kDa
Positive WB detected in	HEK-293 cells, A431 cells, HeLa cells, human brain tissue
Positive IP detected in	HEK-293 cells
Recommended dilution:	WB: 1:500-1:5000 IP: 1:200-1:2000

Application key: WB = Western blotting, IHC = Immunohistochemistry, IF = Immunofluorescence, IP = Immunoprecipitation

Immunogen information

Immunogen:	Ag0328
GenBank accession number:	BC002609
Gene ID (NCBI):	10951
Full name:	Chromobox homolog 1 (HP1 beta homolog Drosophila)

Product information

Purification method:	Antigen affinity purification
Storage:	PBS with 0.1% sodium azide and 50% glycerol pH 7.3. Store at -20°C.