

GPRC5A,RAI3 Polyclonal Antibody

Catalog number: 10309-1-AP

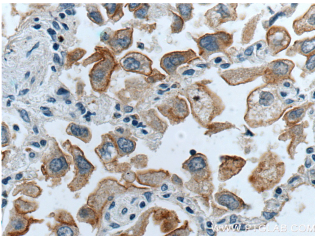
Size: 35 µg/150 µl

Source: Rabbit

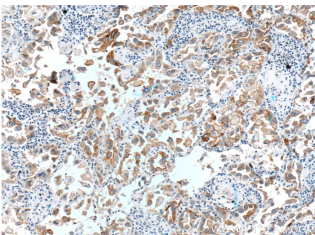
Isotype: IgG

Synonyms:

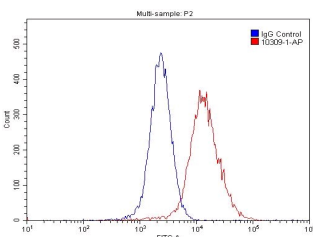
GPRC5A; GPCR5A, GPRC5A,
RAI3, RAIG 1, RAIG1



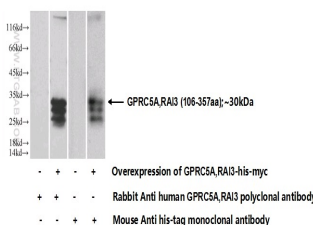
Immunohistochemistry of paraffin-embedded human lung cancer tissue slide using 10309-1-AP (GPRC5A,RAI3 Antibody) at dilution of 1:200 (under 40x lens).



Immunohistochemistry of paraffin-embedded human lung cancer tissue slide using 10309-1-AP (GPRC5A,RAI3 Antibody) at dilution of 1:200 (under 10x lens).



1X10⁶ MCF-7 cells were stained with 0.2µg GPRC5A,RAI3 antibody (10309-1-AP, red) and control antibody (blue). Fixed with 4% PFA blocked with 3% BSA (30 min). Alexa Fluor 488-conjugated AffiniPure Goat Anti-Rabbit IgG(H+L) with dilution 1:1500.



Background

GPRC5A, also named as GPCR5A, RAI3 and RAIG1, belongs to the G-protein coupled receptor 3 family. It is an orphan G-protein coupled receptor (GPCR) that has been associated with malignancy and may play a role in the proliferation of breast cancer cells. GPRC5A is a potential molecular target for treatment of breast cancers. It is suppressed in some human lung carcinoma cells. (PMID:15788639, 20563252, 19552806)

Applications

Tested applications:	ELISA, WB, IHC, FC
Species specificity:	Human; other species not tested.
Calculated GPRC5A,RAI3 MW:	40 kDa
Observed GPRC5A,RAI3 MW:	
Positive WB detected in	Transfected HEK-293 cells
Positive IHC detected in	Human lung cancer tissue, human breast cancer tissue
Positive FC detected in	MCF-7 cells
Recommended dilution:	WB: 1:200-1:2000
	IHC: 1:50-1:500
	FC: N/A

Application key: WB = Western blotting, IHC = Immunohistochemistry, IF = Immunofluorescence, IP = Immunoprecipitation

Immunogen information

Immunogen:	Ag0311
GenBank accession number:	BC003665
Gene ID (NCBI):	9052
Full name:	G protein-coupled receptor, family C, group 5, member A

Product information

Purification method:	Antigen affinity purification
Storage:	PBS with 0.1% sodium azide and 50% glycerol pH 7.3. Store at -20°C.

Transfected HEK-293 cells
were subjected to SDS PAGE
followed by western blot with
10309-1-AP(GPRC5A,RA13
Antibody) at dilution of 1:700