

P16-INK4A Polyclonal Antibody

Catalog number: 10883-1-AP

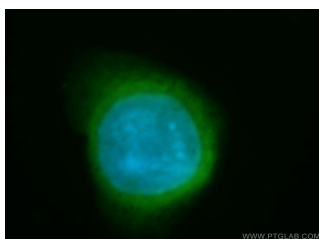
Size: 55 µg/150 µl

Source: Rabbit

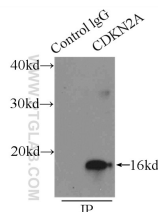
Isotype: IgG

Synonyms:

CDKN2A; ARF, ARF, CDKN2A, CDK4 inhibitor p16 INK4, CDK4 inhibitor p16INK4, CDK4I, CDKN2, CDKN2A, CMM2, INK4, INK4a, MLM, MTS 1, MTS1, Multiple tumor suppressor 1, p14, p14ARF, P16, p16 INK4, p16 INK4a, p16INK4, p16INK4a, P19, TP16



Immunofluorescent analysis of SH-SY5Y cells, using CDKN2A antibody 10883-1-AP at 1:50 dilution and FITC-labeled donkey anti-rabbit IgG(green). Blue pseudocolor = DAPI (fluorescent DNA dye).



IP Result of anti-P16 (IP:10883-1-AP, 4ug; Detection:10883-1-AP 1:1000) with HEK-293 cells lysate 4500ug.



HEK-293 cells were subjected to SDS PAGE followed by western blot with 10883-1-AP (P16 antibody) at dilution of 1:1000

Background

CDKN2A generates several transcript variants which differ in their first exons. At least three alternatively-spliced variants encoding distinct proteins have been reported, and two are related, named p16-INK4 and p14 respectively, sharing 50% identity. The third one is completely structurally un-related, called p14(ARF) or p19(ARF). 10883-1-AP reacted with p16 specifically. P16 plays an important role in regulating the cell cycle, and mutations in p16 increase the risk of developing a variety of cancers, notably melanoma.

Applications

Tested applications:	ELISA, WB, IF, IP, FC, IHC
Cited applications:	IF, IHC, WB
Species specificity:	Human; other species not tested.
Cited species:	Human, mouse, rat
Calculated P16-INK4A MW:	11 kDa
Observed P16-INK4A MW:	16-18 kDa
Positive WB detected in	HEK-293 cells, HeLa cells, PC-3 cells
Positive IP detected in	HEK-293 cells
Positive IHC detected in	Human lung cancer tissue, human cervical cancer tissue, human lymphoma tissue
Positive IF detected in	SH-SY5Y cells
Positive FC detected in	HeLa cells
Recommended dilution:	WB: 1:500-1:5000 IP: 1:500-1:5000 IHC: 1:50-1:500 IF: 1:20-1:200 FC: N/A

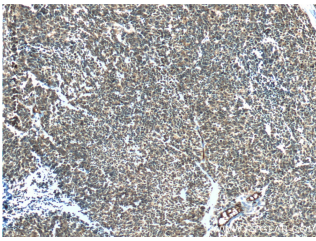
Application key: WB = Western blotting, IHC = Immunohistochemistry, IF = Immunofluorescence, IP = Immunoprecipitation

Immunogen information

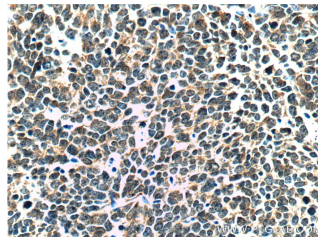
Immunogen:	Ag1328
GenBank accession number:	BC021998
Gene ID (NCBI):	1029
Full name:	Cyclin-dependent kinase inhibitor 2A (melanoma, p16, inhibits CDK4)

Product information

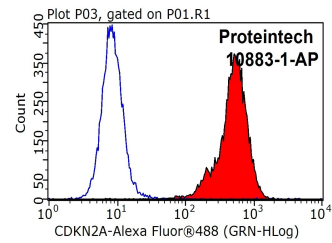
Purification method:	Antigen affinity purification
Storage:	PBS with 0.1% sodium azide and 50% glycerol pH 7.3. Store at -20°C.



Immunohistochemistry of paraffin-embedded human lung cancer tissue slide using 10883-1-AP(P16-INK4A Antibody) at dilution of 1:200 (under 10x lens).



Immunohistochemistry of paraffin-embedded human lung cancer tissue slide using 10883-1-AP(P16-INK4A Antibody) at dilution of 1:200 (under 40x lens).



1X10⁶ HeLa cells were stained with .2ug P16-INK4A antibody (10883-1-AP, red) and control antibody (blue). Fixed with 90% MeOH blocked with 3% BSA (30 min). Alexa Fluor 488-conjugated AffiniPure Goat Anti-Rabbit IgG(H+L) with dilution 1:1000.