

## RBBP8 Polyclonal Antibody

Catalog number: 12624-1-AP

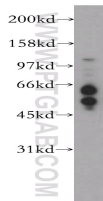
Size: 20 µg/150 µl

Source: Rabbit

Isotype: IgG

Synonyms:

RBBP8; CTIP; RIM



mouse testis tissue were subjected to SDS PAGE followed by western blot with 12624-1-AP(RBBP8 Antibody) at dilution of 1:600

### Background

RBBP8 is an endonuclease that cooperates with the MRE11-RAD50-NBN (MRN) complex in processing meiotic and mitotic double-strand breaks (DSBs) by ensuring both resection and intrachromosomal association of the broken ends. It functions downstream of the MRN complex and ATM, promotes ATR activation and its recruitment to DSBs in the S/G2 phase facilitating the generation of ssDNA. It interacted with BRCA1 to form a complex that regulates CHEK1 activation and controls cell cycle G2/M checkpoints on DNA damage. Also it promotes microhomology-mediated alternative end joining (A-NHEJ) during class-switch recombination and plays an essential role in chromosomal translocations

### Applications

Tested applications:	ELISA, WB
Species specificity:	Human, mouse, rat; other species not tested.
Positive WB detected in:	Mouse testis tissue, A431 cells, Jurkat cells, Raji cells
Calculated RBBP8 MW:	103kd
Observed RBBP8 MW:	120kd
Recommended dilution:	WB: 1:200-1:2000

Application key: WB = Western blotting, IHC = Immunohistochemistry, IF = Immunofluorescence, IP = Immunoprecipitation, FC = Flow cytometry

### Immunogen information

Immunogen:	Ag3314
GenBank accession number:	BC030590
Gene ID (NCBI):	5932
Full name:	Retinoblastoma binding protein 8

### Product information

Purification method:	Antigen affinity purification
Storage:	PBS with 0.1% sodium azide and 50% glycerol pH 7.3. Store at -20°C.