

LDOC1 Polyclonal Antibody

Catalog number: 10113-2-AP

Size: 20 µg/150 µl

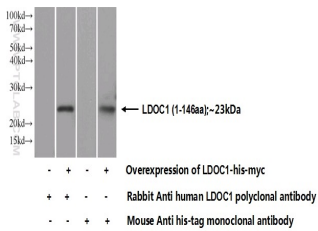
Source: Rabbit

Isotype: IgG

Synonyms:

LDOC1; LDOC1, Mar7, Mart7,

Protein LDOC1



Transfected HEK-293 cells were subjected to SDS PAGE followed by western blot with 10113-2-AP (LDOC1 Antibody) at dilution of 1:350

Background

LDOC1 contains a leucine zipper-like motif and a proline-rich region that shares marked similarity with an SH3-binding domain. LDOC1 localizes to the nucleus and is down-regulated in some cancer cell lines. LDOC1 regulates the transcriptional response mediated by the nuclear factor B (NF-kappa B). The gene encoding LDOC1 protein has been proposed as a tumor suppressor gene which may have an important role in the development and/or progression of some cancers.

Applications

Tested applications:	ELISA, WB
Species specificity:	Human, Mouse; other species not tested.
Calculated LDOC1 MW:	17 kDa
Observed LDOC1 MW:	23 kDa
Positive WB detected in	Transfected HEK-293 cells
Recommended dilution:	WB: 1:200-1:1000

Application key: WB = Western blotting, IHC = Immunohistochemistry, IF = Immunofluorescence, IP = Immunoprecipitation

Immunogen information

Immunogen:	Ag0158
GenBank accession number:	BC003104
Gene ID (NCBI):	23641
Full name:	Leucine zipper, down-regulated in cancer 1

Product information

Purification method:	Antigen affinity purification
Storage:	PBS with 0.1% sodium azide and 50% glycerol pH 7.3. Store at -20°C.