

LSM5 Polyclonal Antibody

Catalog number: 10700-1-AP

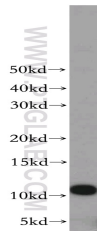
Size: 20 µg/150 µl

Source: Rabbit

Isotype: IgG

Synonyms:

LSM5; FLJ12710; YER146W



HeLa cells were subjected to SDS PAGE followed by western blot with 10700-1-AP (LSM5 Antibody) at dilution of 1:100

Applications

Tested applications:	ELISA, WB
Species specificity:	Human, mouse; other species not tested.
Positive WB detected in:	HeLa cells, HL-60 cells, human placenta tissue, mouse ovary tissue
Calculated LSM5 MW:	10kd
Observed LSM5 MW:	10 kDa
Recommended dilution:	WB: 1:200-1:1000

Application key: WB = Western blotting, IHC = Immunohistochemistry, IF = Immunofluorescence, IP = Immunoprecipitation, FC = Flow cytometry

Immunogen information

Immunogen:	Ag1145
GenBank accession number:	BC005938
Gene ID (NCBI):	23658
Full name:	LSM5 homolog, U6 small nuclear RNA associated (S. cerevisiae)

Product information

Purification method:	Antigen affinity purification
Storage:	PBS with 0.1% sodium azide and 50% glycerol pH 7.3. Store at -20°C.