

SRFBP1 Polyclonal Antibody

Catalog number: 12792-1-AP

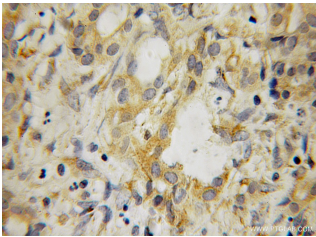
Size: 47 µg/150 µl

Source: Rabbit

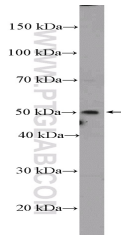
Isotype: IgG

Synonyms:

SRFBP1; BUD22, FLJ25286, P49, p49/STRAP, Rlb1, SRFBP1, STRAP



Immunohistochemical of paraffin-embedded human pancreas cancer using 12792-1-AP (SRFBP1 antibody) at dilution of 1:100 (under 10x lens)



mouse heart tissue were subjected to SDS PAGE followed by western blot with 12792-1-AP (SRFBP1 Antibody) at dilution of 1:300

Background

SRFBP1, also named as P49, p49/STRAP and STRAP, is abundantly expressed in heart and skeletal muscle, and at much lower levels in brain and lung. It may be involved in regulating transcriptional activation of cardiac genes during the aging process. SRFBP1 may play a role in biosynthesis and/or processing of SLC2A4 in adipose cells. This antibody is a rabbit polyclonal antibody raised against residues near the C terminus of human SRFBP1.

Applications

Tested applications:	ELISA, IHC, WB
Species specificity:	Human, Mouse; other species not tested.
Calculated SRFBP1 MW:	429aa, 49 kDa
Observed SRFBP1 MW:	50 kDa
Positive WB detected in	Mouse heart tissue, HeLa cells, HepG2 cells
Positive IHC detected in	Human pancreas cancer tissue
Recommended dilution:	WB: 1:200-1:1000 IHC: 1:20-1:200

Application key: WB = Western blotting, IHC = Immunohistochemistry, IF = Immunofluorescence, IP = Immunoprecipitation

Immunogen information

Immunogen:	Ag3517
GenBank accession number:	BC031222
Gene ID (NCBI):	153443
Full name:	Serum response factor binding protein 1

Product information

Purification method:	Antigen affinity purification
Storage:	PBS with 0.1% sodium azide and 50% glycerol pH 7.3. Store at -20°C.