

PACSIN3 Polyclonal Antibody

Catalog number: 10639-1-AP

Size: 48 µg/150 µl

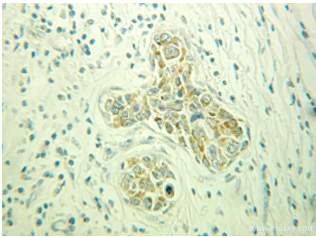
Source: Rabbit

Isotype: IgG

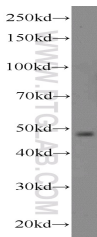
Synonyms:

PACSIN3; Endophilin I,

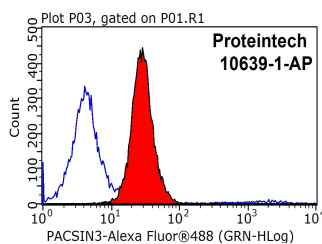
PACSIN3, SDPIII



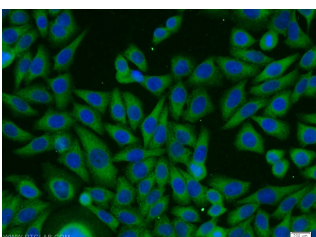
Immunohistochemical of paraffin-embedded human breast cancer using 10639-1-AP (PACSIN3 antibody) at dilution of 1:100 (under 25x lens)



HeLa cells were subjected to SDS PAGE followed by western blot with 10639-1-AP (PACSIN3 antibody) at dilution of 1:1000



1X10⁶ MCF-7 cells were stained with 0.2µg PACSIN3 antibody (10639-1-AP, red) and control antibody (blue). Fixed with 90% MeOH blocked with 3% BSA (30 min). Alexa Fluor 488-conjugated AffiniPure Goat Anti-Rabbit IgG(H+L) with dilution 1:1000.



Immunofluorescent analysis

Applications

Tested applications:	ELISA, WB, IHC, FC, IF
Species specificity:	Human, Mouse, Rat; other species not tested.
Calculated PACSIN3 MW:	48 kDa
Observed PACSIN3 MW:	48 kDa
Positive WB detected in	HeLa cells, mouse heart tissue, mouse liver tissue, mouse lung tissue, mouse skeletal muscle tissue, rat brain tissue
Positive IHC detected in	Human breast cancer tissue, human heart tissue
Positive IF detected in	HeLa cells
Positive FC detected in	MCF-7 cells
Recommended dilution:	WB: 1:200-1:2000 IHC: 1:20-1:200 IF: 1:10-1:100 FC: N/A

Application key: WB = Western blotting, IHC = Immunohistochemistry, IF = Immunofluorescence, IP = Immunoprecipitation

Immunogen information

Immunogen:	Ag1006
GenBank accession number:	BC007914
Gene ID (NCBI):	29763
Full name:	Protein kinase C and casein kinase substrate in neurons 3

Product information

Purification method:	Antigen affinity purification
Storage:	PBS with 0.1% sodium azide and 50% glycerol pH 7.3. Store at -20°C.

of HeLa cells using 10639-1-
AP(PACSIN3 Antibody) at
dilution of 1:25 and Alexa
Fluor 488-conjugated
AffiniPure Goat Anti-Rabbit
IgG(H+L)