

ORC4L Polyclonal Antibody

Catalog number: 13026-1-AP

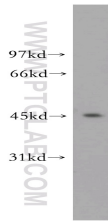
Size: 20 µg/150 µl

Source: Rabbit

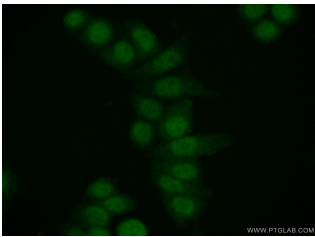
Isotype: IgG

Synonyms:

ORC4L; ORC4, ORC4L, ORC4P



HeLa cells were subjected to SDS PAGE followed by western blot with 13026-1-AP(ORC4L antibody) at dilution of 1:500



Immunofluorescent analysis of (10% Formaldehyde) fixed HeLa cells using 13026-1-AP(ORC4L Antibody) at dilution of 1:50 and Alexa Fluor 488-conjugated AffiniPure Goat Anti-Rabbit IgG(H+L)

Applications

Tested applications:	ELISA, WB, IF
Species specificity:	Human,Mouse,Rat; other species not tested.
Calculated ORC4L MW:	45 kDa
Observed ORC4L MW:	45 kDa
Positive WB detected in	HeLa cells
Positive IF detected in	HeLa cells
Recommended dilution:	WB: 1:200-1:2000 IF: 1:50-1:500

Application key: WB = Western blotting, IHC = Immunohistochemistry, IF = Immunofluorescence, IP = Immunoprecipitation

Immunogen information

Immunogen:	Ag3625
GenBank accession number:	BC014847
Gene ID (NCBI):	5000
Full name:	Origin recognition complex, subunit 4-like (yeast)

Product information

Purification method:	Antigen affinity purification
Storage:	PBS with 0.1% sodium azide and 50% glycerol pH 7.3. Store at -20°C.