

MTM1 Polyclonal Antibody

Catalog number: 13924-1-AP

Size: 52 µg/150 µl

Source: Rabbit

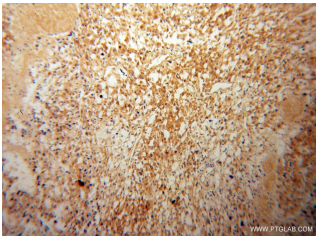
Isotype: IgG

Synonyms:

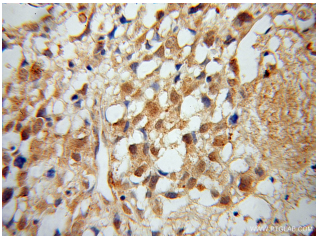
MTM1; CG2, CNM, MTM1,

MTMX, Myotubularin,

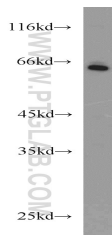
myotubularin 1, XLMTM



Immunohistochemical of paraffin-embedded human osteosarcoma using 13924-1-AP (MTM1 antibody) at dilution of 1:100 (under 10x lens)



Immunohistochemical of paraffin-embedded human osteosarcoma using 13924-1-AP (MTM1 antibody) at dilution of 1:100 (under 40x lens)



L02 cells were subjected to SDS PAGE followed by western blot with 13924-1-AP (MTM1 antibody) at dilution of 1:1000

Background

The MTM1 (Myotubularin) gene encodes a protein that belongs to a family of putative tyrosine phosphatases. It is required for muscle cell differentiation. The protein is also a potent phosphatidylinositol 3-phosphate (PI3P) phosphatase, which is a 66 kDa ubiquitous protein that is found mutated in the X-linked genetic disorder myotubular myopathy (XLMTM). MTM1 could therefore act as a regulator of the highly active phosphoinositide (PI) metabolism in cells, where interconversions of the eight PIs described so far is controlled by a set of specific kinases and phosphatases (PMID:14660569).

Applications

Tested applications:	ELISA, WB, IHC
Species specificity:	Human, Mouse, Rat; other species not tested.
Calculated MTM1 MW:	70kd
Observed MTM1 MW:	63kd
Positive WB detected in	L02 cells, Jurkat cells
Positive IHC detected in	Human osteosarcoma tissue
Recommended dilution:	WB: 1:500-1:5000 IHC: 1:20-1:200

Application key: WB = Western blotting, IHC = Immunohistochemistry, IF = Immunofluorescence, IP = Immunoprecipitation

Immunogen information

Immunogen:	Ag4940
GenBank accession number:	BC030779
Gene ID (NCBI):	4534
Full name:	Myotubularin 1

Product information

Purification method:	Antigen affinity purification
Storage:	PBS with 0.02% sodium azide and 50% glycerol pH 7.3. Store at -20°C.