

AMBRA1 Polyclonal Antibody

Catalog number: 13762-1-AP

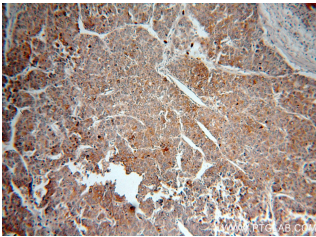
Size: 33 µg/150 µl

Source: Rabbit

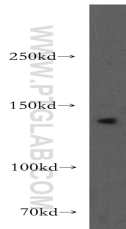
Isotype: IgG

Synonyms:

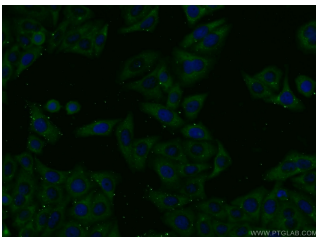
AMBRA1; AMBRA1,
autophagy/beclin 1 regulator 1,
FLJ20294, KIAA1736, WDR94



Immunohistochemical of paraffin-embedded human liver cancer using 13762-1-AP (AMBRA1 antibody) at dilution of 1:50 (under 10x lens)



mouse brain tissue were subjected to SDS PAGE followed by western blot with 13762-1-AP (AMBRA1 antibody) at dilution of 1:300



Immunofluorescent analysis of HepG2 cells using 13762-1-AP (AMBRA1 Antibody) at dilution of 1:25 and Alexa Fluor 488-conjugated AffiniPure Goat Anti-Rabbit IgG(H+L)

Applications

Tested applications:	ELISA, IHC, WB, IF
Species specificity:	Human, Mouse, Rat; other species not tested.
Calculated AMBRA1 MW:	1208aa, 133 kDa
Observed AMBRA1 MW:	130-135kd
Positive WB detected in	Mouse brain tissue, HepG2 cells, HT-1080 cells, human brain tissue, MCF7 cells
Positive IHC detected in	Human liver cancer tissue
Positive IF detected in	HepG2 cells
Recommended dilution:	WB: 1:200-1:1000 IHC: 1:20-1:200 IF: 1:10-1:100

Application key: WB = Western blotting, IHC = Immunohistochemistry, IF = Immunofluorescence, IP = Immunoprecipitation

Immunogen information

Immunogen:	Ag4735
GenBank accession number:	BC045609
Gene ID (NCBI):	55626
Full name:	Autophagy/beclin-1 regulator 1

Product information

Purification method:	Antigen affinity purification
Storage:	PBS with 0.02% sodium azide and 50% glycerol pH 7.3. Store at -20°C.