

CLEC1A Polyclonal Antibody

Catalog number: 13394-1-AP

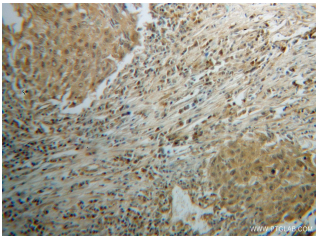
Size: 54 µg/150 µl

Source: Rabbit

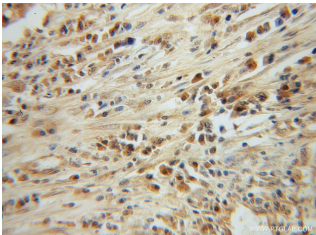
Isotype: IgG

Synonyms:

CLEC1A; C type lectin like receptor 1, CLEC 1, CLEC1, CLEC1A



Immunohistochemical of paraffin-embedded human lung cancer using 13394-1-AP(CLEC1A antibody) at dilution of 1:100 (under 10x lens)



Immunohistochemical of paraffin-embedded human lung cancer using 13394-1-AP(CLEC1A antibody) at dilution of 1:100 (under 40x lens)



mouse lung tissue were subjected to SDS PAGE followed by western blot with 13394-1-AP(CLEC1A antibody) at dilution of 1:300

Background

CLEC1A (C-type lectin domain family 1 member A) is a single-pass type II membrane protein that contains one C-type lectin domain. Members of the C-type lectin domain family share a common protein fold and have diverse functions, such as cell adhesion, cell-cell signalling, glycoprotein turnover, and roles in inflammation and immune response. CLEC1A is expressed preferentially in dendritic cells and plays a role in regulating dendritic cell function (PMID: 10671229).

Applications

Tested applications:	ELISA, WB, IHC
Species specificity:	Human, Mouse, Rat; other species not tested.
Calculated CLEC1A MW:	280aa, 32 kDa
Observed CLEC1A MW:	32 kDa
Positive WB detected in	Mouse lung tissue, mouse thymus tissue
Positive IHC detected in	Human lung cancer tissue
Recommended dilution:	WB: 1:500-1:5000 IHC: 1:20-1:200

Application key: WB = Western blotting, IHC = Immunohistochemistry, IF = Immunofluorescence, IP = Immunoprecipitation

Immunogen information

Immunogen:	Ag4058
GenBank accession number:	BC039072
Gene ID (NCBI):	51267
Full name:	C-type lectin domain family 1, member A

Product information

Purification method:	Antigen affinity purification
Storage:	PBS with 0.02% sodium azide and 50% glycerol pH 7.3. Store at -20°C.