

DPM1 Polyclonal Antibody

Catalog number: 12403-2-AP

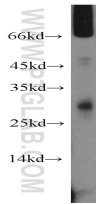
Size: 20 µg/150 µl

Source: Rabbit

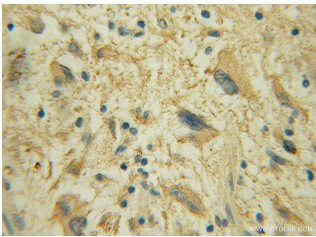
Isotype: IgG

Synonyms:

DPM1; CDGIE; MPDS



mouse pancreas tissue were subjected to SDS PAGE followed by western blot with 12403-2-AP(DPM1 Antibody) at dilution of 1:500



Immunohistochemistry of paraffin-embedded human gliomas using 12403-2-AP(DPM1 Antibody) at Dilution 1:50 (under 10x lens)

Applications

Tested applications:	ELISA, WB, IHC
Species specificity:	Human, mouse; other species not tested.
Positive WB detected in:	Mouse pancreas tissue, human brain tissue
Calculated DPM1 MW:	260aa,30kd
Observed DPM1 MW:	27-32 kDa
Positive IHC detected in:	Human gliomas
Recommended dilution:	WB: 1:200-1:2000 IHC: 1:20-1:200

Application key: WB = Western blotting, IHC = Immunohistochemistry, IF = Immunofluorescence, IP = Immunoprecipitation, FC = Flow cytometry

Immunogen information

Immunogen:	Ag1128
GenBank accession number:	BC007073
Gene ID (NCBI):	8813
Full name:	Dolichyl-phosphate mannosyltransferase polypeptide 1, catalytic subunit

Product information

Purification method:	Antigen affinity purification
Storage:	PBS with 0.1% sodium azide and 50% glycerol pH 7.3. Store at -20°C.