

PARVB Polyclonal Antibody

Catalog number: 14463-1-AP

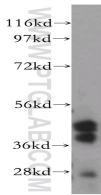
Size: 20 µg/150 µl

Source: Rabbit

Isotype: IgG

Synonyms:

PARVB; PARVB, CGI 56, Affixin,
parvin, beta, Beta parvin



mouse spleen tissue were subjected to SDS PAGE followed by western blot with 14463-1-AP(PARVB antibody) at dilution of 1:100

Applications

Tested applications:	ELISA, WB
Cited applications:	WB
Species specificity:	Human, mouse, rat; other species not tested.
Cited species:	Human
Calculated PARVB MW:	42 kDa
Observed PARVB MW:	42kd and 45kd
Positive WB detected in:	Mouse spleen tissue
Recommended dilution:	WB: 1:200-1:2000

Application key: WB = Western blotting, IHC = Immunohistochemistry, IF = Immunofluorescence, IP = Immunoprecipitation

Immunogen information

Immunogen:	Ag5760
GenBank accession number:	BC046103
Gene ID (NCBI):	29780
Full name:	Parvin, beta

Product information

Purification method:	Antigen affinity purification
Storage:	PBS with 0.02% sodium azide and 50% glycerol pH 7.3. Store at -20°C.