

Kallikrein 11 Polyclonal Antibody

Catalog number: 12698-1-AP

Size: 72 µg/150 µl

Source: Rabbit

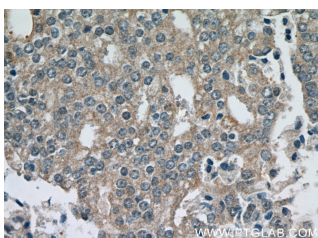
Isotype: IgG

Synonyms:

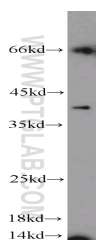
KLK11; Hippostasin, hK11,
Kallikrein 11, KLK11, PRSS20,

Serine protease 20, TLSP,

Trypsin like protease



Immunohistochemical of paraffin-embedded human prostate cancer using 12698-1-AP (KLK11 antibody) at dilution of 1:200 (under 40x lens)



MCF7 cells were subjected to SDS PAGE followed by western blot with 12698-1-AP (KLK11 antibody) at dilution of 1:1000

Background

KLK11 (Kallikrein-11) is also named as PRSS20, TLSP and belongs to the peptidase S1 family and Kallikrein subfamily. It is a multifunctional protease cleaving several substrates for kallikrein and trypsin and involved in normal physiology processes in bronchus. This full length protein has a signal peptide, a propeptide and four glycosylation sites. It has 4 isoforms produced by alternative splicing with the molecular weight of 31 kDa, 27 kDa, 34 kDa and 30 kDa.

Applications

Tested applications:	ELISA, WB, IHC
Species specificity:	Human, Mouse, Rat; other species not tested.
Calculated Kallikrein 11 MW:	250aa, 27kd
Observed Kallikrein 11 MW:	40kd
Positive WB detected in	MCF7 cells, HeLa cells, PC-3 cells, Y79 cells
Positive IHC detected in	Human prostate cancer tissue, human brain tissue
Recommended dilution:	WB: 1:500-1:5000 IHC: 1:20-1:200

Application key: WB = Western blotting, IHC = Immunohistochemistry, IF = Immunofluorescence, IP = Immunoprecipitation

Immunogen information

Immunogen:	Ag3427
GenBank accession number:	BC022068
Gene ID (NCBI):	11012
Full name:	Kallikrein-related peptidase 11

Product information

Purification method:	Antigen affinity purification
Storage:	PBS with 0.1% sodium azide and 50% glycerol pH 7.3. Store at -20°C.