

SLD5 Polyclonal Antibody

Catalog number: 13315-1-AP

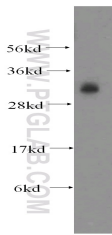
Size: 20 µg/150 µl

Source: Rabbit

Isotype: IgG

Synonyms:

GIN54; GINS4, SLD5, GINS
complex subunit 4



mouse testis tissue were subjected to SDS PAGE followed by western blot with 13315-1-AP(SLD5 antibody) at dilution of 1:400

Applications

Tested applications:	ELISA, WB
Species specificity:	Human, mouse, rat; other species not tested.
Calculated SLD5 MW:	223aa,26 kDa
Observed SLD5 MW:	32kd
Positive WB detected in	Mouse testis tissue, mouse thymus tissue
Recommended dilution:	WB: 1:200-1:2000

Application key: WB = Western blotting, IHC = Immunohistochemistry, IF = Immunofluorescence, IP = Immunoprecipitation

Immunogen information

Immunogen:	Ag4158
GenBank accession number:	BC027454
Gene ID (NCBI):	84296
Full name:	GIN5 complex subunit 4 (Slid5 homolog)

Product information

Purification method:	Antigen affinity purification
Storage:	PBS with 0.02% sodium azide and 50% glycerol pH 7.3. Store at -20°C.