

RAB38 Polyclonal Antibody

Catalog number: 12234-1-AP

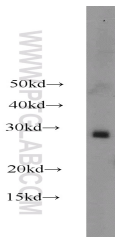
Size: 50 µg/150 µl

Source: Rabbit

Isotype: IgG

Synonyms:

RAB38; RAB38, Ras related protein Rab 38, Melanoma antigen NY MEL 1, NY MEL 1, rrGTPbp



NIH/3T3 cells were subjected to SDS PAGE followed by western blot with 12234-1-AP (RAB38 antibody) at dilution of 1:500

Applications

Tested applications:	ELISA, WB
Species specificity:	Human, mouse; other species not tested.
Calculated RAB38 MW:	211aa, 24 kDa
Observed RAB38 MW:	27 kDa
Positive WB detected in:	NIH/3T3 cells
Recommended dilution:	WB: 1:200-1:2000

Application key: WB = Western blotting, IHC = Immunohistochemistry, IF = Immunofluorescence, IP = Immunoprecipitation

Immunogen information

Immunogen:	Ag2874
GenBank accession number:	BC015808
Gene ID (NCBI):	23682
Full name:	RAB38, member RAS oncogene family

Product information

Purification method:	Antigen affinity purification
Storage:	PBS with 0.1% sodium azide and 50% glycerol pH 7.3. Store at -20°C.