

BACH1 Polyclonal Antibody

Catalog number: 14018-1-AP

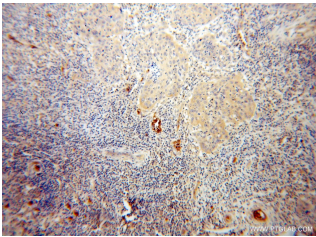
Size: 67 µg/150 µl

Source: Rabbit

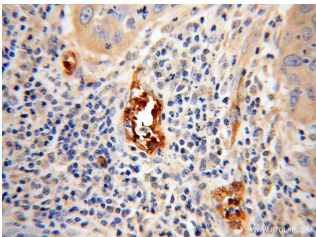
Isotype: IgG

Synonyms:

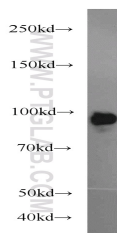
BACH1; BACH 1, BACH1, BTB and CNC homolog 1, HA2303



Immunohistochemical of paraffin-embedded human cervical cancer using 14018-1-AP (BACH1 antibody) at dilution of 1:100 (under 10x lens)



Immunohistochemical of paraffin-embedded human cervical cancer using 14018-1-AP (BACH1 antibody) at dilution of 1:100 (under 40x lens)



HEK-293 cells were subjected to SDS PAGE followed by western blot with 14018-1-AP (BACH1 antibody) at dilution of 1:1000

Background

BTB and CNC homology 1, basic leucine zipper transcription factor 1 (BACH1) is a heme-regulated transcriptional regulator that acts as repressor or activator and a member of the AP-1 superfamily. MafK belongs to the small Maf family that can function as transcriptional activators or repressors depending on the proteins with which they form heterodimers. BACH1 has crucial roles in both stress responses and transformation by H-RasV12

Applications

Tested applications:	ELISA, IHC, WB
Cited applications:	WB
Species specificity:	Human, Mouse, Rat; other species not tested.
Cited species:	Human
Calculated BACH1 MW:	82 kDa
Observed BACH1 MW:	92 kDa
Positive WB detected in:	HEK-293 cells, HeLa cells, MCF7 cells
Positive IHC detected in:	Human cervical cancer tissue
Recommended dilution:	WB: 1:500-1:5000 IHC: 1:20-1:200

Application key: WB = Western blotting, IHC = Immunohistochemistry, IF = Immunofluorescence, IP = Immunoprecipitation

Immunogen information

Immunogen:	Ag5128
GenBank accession number:	BC063307
Gene ID (NCBI):	571
Full name:	BTB and CNC homology 1, basic leucine zipper transcription factor 1

Product information

Purification method:	Antigen affinity purification
Storage:	PBS with 0.02% sodium azide and 50% glycerol pH 7.3. Store at -20°C.