

TGFBI / BIGH3 Polyclonal Antibody

Catalog number: 10188-1-AP

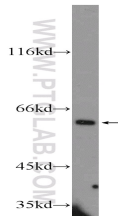
Size: 34 µg/150 µl

Source: Rabbit

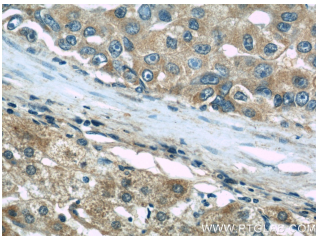
Isotype: IgG

Synonyms:

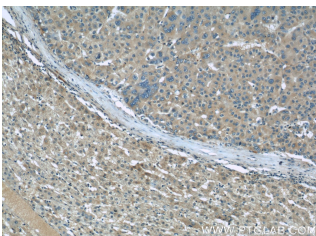
TGFBI; Beta ig h3, BIGH3, CDB1, CDG2, CDGG1, CSD, CSD1, CSD2, CSD3, EBMD, Kerato epithelin, LCD1, RGD CAP, TGFBI



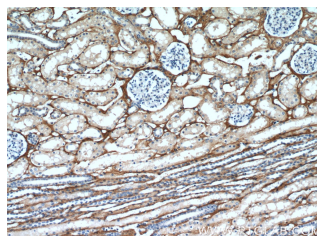
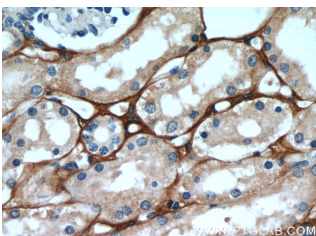
Y79 cells were subjected to SDS PAGE followed by western blot with 10188-1-AP (BIGH3 Antibody) at dilution of 1:600



Immunohistochemical of paraffin-embedded human liver cancer using 10188-1-AP (BIGH3 antibody) at dilution of 1:50 (under 40x lens)



Immunohistochemical of paraffin-embedded human liver cancer using 10188-1-AP (BIGH3 antibody) at dilution of 1:50 (under 10x lens)



Background

TGFBI, also named as BIGH3, is an adhesion protein which may play an important role in cell-collagen interactions. TGFBI was first detected in a human lung adenocarcinoma cell line after stimulation by TGF-beta (PMID: 2647740). TGFBI is secreted into the extracellular matrix (ECM) as an attachment protein. It functions mainly in cell adhesion, migration, proliferation, apoptosis, and angiogenesis. TGFBI expression is down-regulated in a variety of cancer cell lines and clinical tissue samples, and it can be used as a marker for breast cancer progression (PMID: 18425347). Defects in TGFBI have been shown to be involved in several corneal dystrophies (PMID: 18470323).

Applications

Tested applications:	ELISA, IP, IHC, WB
Cited applications:	IF, IHC, IP, WB
Species specificity:	Human, Mouse, Rat; other species not tested.
Cited species:	Human, mouse
Calculated TGFBI / BIGH3 MW:	683aa, 75 kDa
Observed TGFBI / BIGH3 MW:	64 kDa
Positive WB detected in	Y79 cells, HeLa cells, human kidney tissue, mouse eye tissue, mouse liver tissue
Positive IP detected in	HeLa cells
Positive IHC detected in	Human liver cancer tissue, human kidney tissue, human pancreas cancer tissue
Recommended dilution:	WB: 1:200-1:2000 IP: 1:200-1:1000 IHC: 1:20-1:200

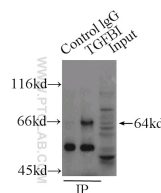
Application key: WB = Western blotting, IHC = Immunohistochemistry, IF = Immunofluorescence, IP = Immunoprecipitation

Immunogen information

Immunogen:	Ag0241
GenBank accession number:	BC000097
Gene ID (NCBI):	7045
Full name:	Transforming growth factor, beta-induced, 68kDa

Product information

Purification method:	Antigen affinity purification
Storage:	PBS with 0.1% sodium azide and 50% glycerol pH 7.3. Store at -20°C.



Immunohistochemical of paraffin-embedded human kidney using 10188-1-AP(BIGH3 antibody) at dilution of 1:50 (under 40x lens)

Immunohistochemical of paraffin-embedded human kidney using 10188-1-AP(BIGH3 antibody) at dilution of 1:50 (under 10x lens)

IP Result of anti-BIGH3 (IP:10188-1-AP, 3ug; Detection:10188-1-AP 1:300) with HeLa cells lysate 1000ug.