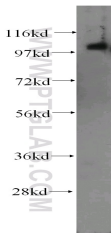


ITPKC Polyclonal Antibody

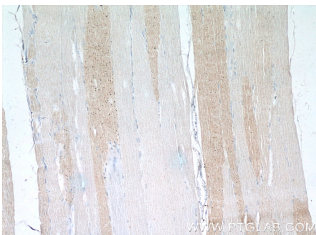
Catalog number: 14267-1-AP
Size: 46 µg/150 µl
Source: Rabbit
Isotype: IgG
Synonyms:
ITPKC; InsP 3 kinase C, IP3 3 kinase C, IP3K C, IP3KC, ITPKC



Immunofluorescent analysis of HepG2 cells, using ITPKC antibody 14267-1-AP at 1:50 dilution and Rhodamine-labeled goat anti-rabbit IgG (red). Blue pseudocolor = DAPI (fluorescent DNA dye).



human heart tissue were subjected to SDS PAGE followed by western blot with 14267-1-AP(ITPKC antibody) at dilution of 1:400



Immunohistochemistry of paraffin-embedded human skeletal muscle tissue slide using 14267-1-AP(ITPKC Antibody) at dilution of 1:50 (under 10x lens)



Immunohistochemistry of

Background

ITPKC(Inositol-trisphosphate 3-kinase C) is also named as IP3KC and belongs to the inositol phosphokinase (IPK) family. It can phosphorylate inositol 2,4,5-triphosphate to inositol 2,4,5,6-tetrakisphosphate and is relatively weakly activated by the calcium-calmodulin complex. ITPKC also acts as a negative regulator of T-cell activation through the Ca(2+)/NFAT signaling pathway, and the C allele may contribute to immune hyperreactivity in Kawasaki disease(PMID:17160344).

Applications

Tested applications:	ELISA, WB, IF, IHC, IP
Species specificity:	Human; other species not tested.
Calculated ITPKC MW:	75 kDa
Observed ITPKC MW:	100-105 kDa
Positive WB detected in	Human heart tissue
Positive IP detected in	HepG2 cells
Positive IHC detected in	Human skeletal muscle tissue, human heart tissue, human lymphoma tissue
Positive IF detected in	HepG2 cells
Recommended dilution:	WB: 1:200-1:2000 IP: 1:200-1:1000 IHC: 1:20-1:200 IF: 1:20-1:200

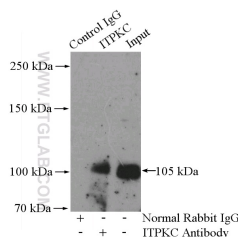
Application key: WB = Western blotting, IHC = Immunohistochemistry, IF = Immunofluorescence, IP = Immunoprecipitation

Immunogen information

Immunogen:	Ag5583
GenBank accession number:	BC060788
Gene ID (NCBI):	80271
Full name:	Inositol 1,4,5-trisphosphate 3-kinase C

Product information

Purification method:	Antigen affinity purification
Storage:	PBS with 0.02% sodium azide and 50% glycerol pH 7.3. Store at -20°C.



IP Result of anti-ITPKC

paraffin-embedded human skeletal muscle tissue slide using 14267-1-AP (ITPKC Antibody) at dilution of 1:50 (under 40x lens) (IP:14267-1-AP, 4ug; Detection:14267-1-AP 1:400) with HepG2 cells lysate 1600ug.