

PGM2 Polyclonal Antibody

Catalog number: 11022-1-AP

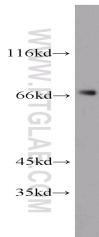
Size: 20 µg/150 µl

Source: Rabbit

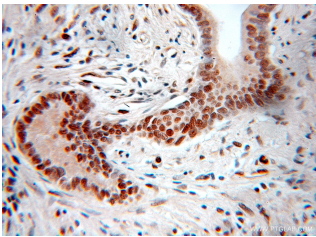
Isotype: IgG

Synonyms:

PGM2; FLJ10983; MSTP006



human brain tissue were subjected to SDS PAGE followed by western blot with 11022-1-AP(PGM2 Antibody) at dilution of 1:200



Immunohistochemistry of paraffin-embedded human pancreas cancer using 11022-1-AP(PGM2 Antibody) at Dilution 1:100 (under 10x lens)

Applications

Tested applications:	ELISA, WB, IHC
Species specificity:	Human; other species not tested.
Positive WB detected in:	Human brain tissue, HEK-293 cells
Calculated PGM2 MW:	68kd
Observed PGM2 MW:	68 kDa
Positive IHC detected in:	Human pancreas cancer
Recommended dilution:	WB: 1:200-1:1000 IHC: 1:50-1:200

Application key: WB = Western blotting, IHC = Immunohistochemistry, IF = Immunofluorescence, IP = Immunoprecipitation, FC = Flow cytometry

Immunogen information

Immunogen:	Ag1488
GenBank accession number:	BC010087
Gene ID (NCBI):	55276
Full name:	Phosphoglucomutase 2

Product information

Purification method:	Antigen affinity purification
Storage:	PBS with 0.1% sodium azide and 50% glycerol pH 7.3. Store at -20°C.