

CDC14A Polyclonal Antibody

Catalog number: 13660-1-AP

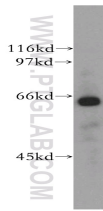
Size: 20 µg/150 µl

Source: Rabbit

Isotype: IgG

Synonyms:

CDC14A; cdc14; hCDC14



human heart tissue were subjected to SDS PAGE followed by western blot with 13660-1-AP(CDC14A Antibody) at dilution of 1:1000

Applications

Tested applications:	ELISA, WB
Species specificity:	Human, mouse, rat; other species not tested.
Positive WB detected in:	Human heart tissue, HeLa cells, human brain tissue
Calculated CDC14A MW:	594aa,66kd
Observed CDC14A MW:	66kd
Recommended dilution:	WB: 1:500-1:5000

Application key: WB = Western blotting, IHC = Immunohistochemistry, IF = Immunofluorescence, IP = Immunoprecipitation, FC = Flow cytometry

Immunogen information

Immunogen:	Ag4556
GenBank accession number:	BC038979
Gene ID (NCBI):	8556
Full name:	CDC14 cell division cycle 14 homolog A (<i>S. cerevisiae</i>)

Product information

Purification method:	Antigen affinity purification
Storage:	PBS with 0.02% sodium azide and 50% glycerol pH 7.3. Store at -20°C.