

## SERCA3 Polyclonal Antibody

Catalog number: 13619-1-AP

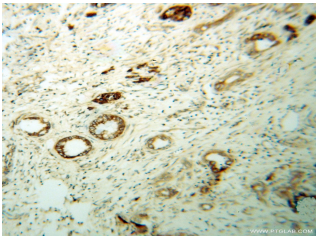
Size: 20 µg/150 µl

Source: Rabbit

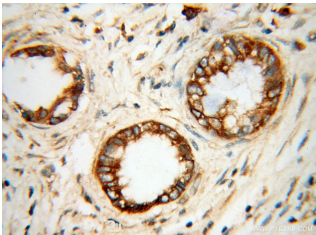
Isotype: IgG

Synonyms:

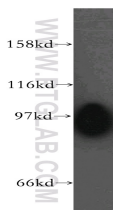
ATP2A3; ATP2A3, Calcium pump 3, SERCA3, SR Ca(2+) ATPase 3



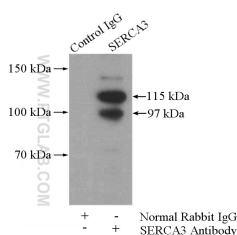
Immunohistochemical of paraffin-embedded human pancreas cancer using 13619-1-AP (ATP2A3 antibody) at dilution of 1:100 (under 10x lens)



Immunohistochemical of paraffin-embedded human pancreas cancer using 13619-1-AP (ATP2A3 antibody) at dilution of 1:100 (under 40x lens)



mouse skeletal muscle tissue were subjected to SDS PAGE followed by western blot with 13619-1-AP (ATP2A3 antibody) at dilution of 1:500



IP Result of anti-ATP2A3

(IP:13619-1-AP, 4µg;

### Applications

Tested applications:	ELISA, WB, IHC, IP
Species specificity:	Human, Mouse, Rat; other species not tested.
Calculated SERCA3 MW:	1043aa, 114 kDa
Observed SERCA3 MW:	97 kDa
Positive WB detected in	Mouse skeletal muscle tissue
Positive IP detected in	Mouse skeletal muscle tissue
Positive IHC detected in	Human pancreas cancer tissue
Recommended dilution:	WB: 1:500-1:5000
	IP: 1:200-1:2000
	IHC: 1:20-1:200

Application key: WB = Western blotting, IHC = Immunohistochemistry, IF = Immunofluorescence, IP = Immunoprecipitation

### Immunogen information

Immunogen:	Ag4527
GenBank accession number:	BC035729
Gene ID (NCBI):	489
Full name:	ATPase, Ca <sup>++</sup> transporting, ubiquitous

### Product information

Purification method:	Antigen affinity purification
Storage:	PBS with 0.02% sodium azide and 50% glycerol pH 7.3. Store at -20°C.

Detection:13619-1-AP 1:500)  
with mouse skeletal muscle  
tissue lysate 3600ug.