

GILZ Polyclonal Antibody

Catalog number: 12352-1-AP

Size: 34 µg/150 µl

Source: Rabbit

Isotype: IgG

Synonyms:

TSC22D3; DIP, DKFZp313A1123,

DSIP immunoreactive peptide,

DSIPI, GILZ, hDIP, Protein DIP,

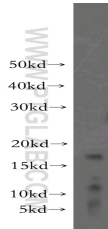
TSC 22 like protein, TSC 22

related protein, TSC 22R, TSC22

domain family protein 3, TSC22

domain family, member 3,

TSC22D3



mouse brain tissue were subjected to SDS PAGE followed by western blot with 12352-1-AP(TSC22D3 antibody) at dilution of 1:500

Applications

Tested applications:	ELISA, WB
Species specificity:	Human,Mouse,Rat; other species not tested.
Calculated GILZ MW:	134aa,15 kDa
Observed GILZ MW:	17kd
Positive WB detected in	Mouse brain tissue
Recommended dilution:	WB: 1:500-1:5000

Application key: WB = Western blotting, IHC = Immunohistochemistry, IF = Immunofluorescence, IP = Immunoprecipitation

Immunogen information

Immunogen:	Ag3015
GenBank accession number:	BC018148
Gene ID (NCBI):	1831
Full name:	TSC22 domain family, member 3

Product information

Purification method:	Antigen affinity purification
Storage:	PBS with 0.02% sodium azide and 50% glycerol pH 7.3. Store at -20°C.