

## ADAM12 Polyclonal Antibody

Catalog number: 14139-1-AP

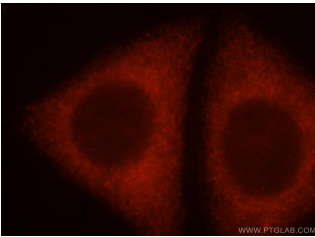
Size: 39 µg/150 µl

Source: Rabbit

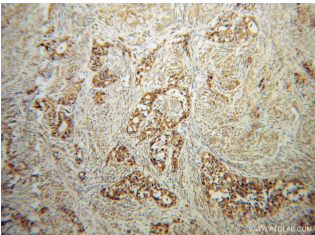
Isotype: IgG

Synonyms:

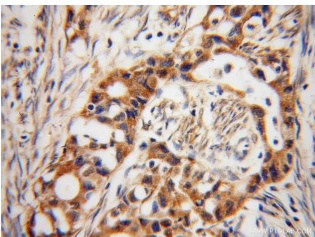
ADAM12; ADAM 12, ADAM12, MCMP, MCMPMlna, Meltrin alpha, MLTN, MLTNA



Immunofluorescent analysis of HepG2 cells, using ADAM12 antibody 14139-1-AP at 1:25 and Rhodamine-labeled goat anti-rabbit IgG (red).



Immunohistochemical of paraffin-embedded human endometrial cancer using 14139-1-AP (ADAM12 antibody) at dilution of 1:100 (under 10x lens)



Immunohistochemical of paraffin-embedded human endometrial cancer using 14139-1-AP (ADAM12 antibody) at dilution of 1:100 (under 40x lens)

### Background

ADAM12, also named as MLTN and Meltrin-alpha, is involved in skeletal muscle regeneration, specifically at the onset of cell fusion. It is also involved in macrophage-derived giant cells (MGC) and osteoclast formation from mononuclear precursors. ADAM12 is expressed in human malignant tumors. It is involved in the regulation of growth factor activities and integrin functions, leading to promotion of cell growth and invasion, although the precise mechanisms of these are not clear at the present time. (PMID:17355265) ADAM12's ability to degrade extracellular matrix components likely allows it to detach cancer cells from the basement membrane and assist them on their route to metastasis. But the protein's role not just as a biomarker of breast cancer but as a gateway to cancer cell migration is only now being understood. This antibody can recognize all isoforms of ADAM12. ADAM12 has 4 forms: 120kd full-length form, 90kd mature (processed form that lack the prodomain); 50-68kd degradation product and 27kd prodomain.

### Applications

Tested applications:	ELISA, WB, IHC, IF, IP
Cited applications:	IF, IHC, IP, WB
Species specificity:	Human, Mouse; other species not tested.
Cited species:	Human, mouse
Calculated ADAM12 MW:	100kd
Observed ADAM12 MW:	97kd, 68kd
Positive WB detected in	Mouse brain tissue, HeLa cells, human placenta tissue, mouse colon tissue, mouse heart tissue, Y79 cells
Positive IP detected in	HeLa cells
Positive IHC detected in	Human endometrial cancer tissue, human breast cancer tissue, human placenta tissue
Positive IF detected in	HepG2 cells
Recommended dilution:	WB: 1:500-1:5000 IP: 1:200-1:1000 IHC: 1:20-1:200 IF: 1:10-1:100

Application key: WB = Western blotting, IHC = Immunohistochemistry, IF = Immunofluorescence, IP = Immunoprecipitation

### Immunogen information

Immunogen:	Ag5206
GenBank accession number:	BC060804
Gene ID (NCBI):	8038
Full name:	ADAM metallopeptidase domain 12

### Product information

Purification method:	Antigen affinity purification
Storage:	PBS with 0.02% sodium azide and 50% glycerol pH 7.3. Store at -20°C.