

UBE2D3 Polyclonal Antibody

Catalog number: 11677-1-AP

Size: 130 µg/150 µl

Source: Rabbit

Isotype: IgG

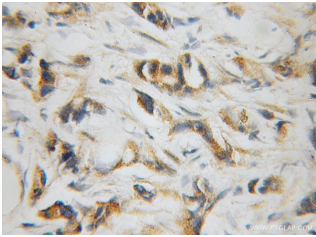
Synonyms:

UBE2D3; E2(17)KB3, UBC4/5,

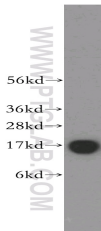
UBC5C, UBCH5C, UBE2D3,

Ubiquitin carrier protein D3,

Ubiquitin protein ligase D3



Immunohistochemical of paraffin-embedded human prostate cancer using 11677-1-AP (UBE2D3 antibody) at dilution of 1:100 (under 10x lens)



human brain tissue were subjected to SDS PAGE followed by western blot with 11677-1-AP (UBE2D3 antibody) at dilution of 1:500

Background

UBE2D3 (Ubiquitin-conjugating enzyme E2 D3) is also named as UBC5C, UBCH5C and belongs to the ubiquitin-conjugating enzyme family. It accepts ubiquitin from the E1 complex and catalyzes its covalent attachment to other proteins. It has 3 isoforms produced by alternative splicing.

Applications

Tested applications:	ELISA, WB, IHC
Cited applications:	IHC, WB
Species specificity:	Human, Mouse, Rat; other species not tested.
Cited species:	Human
Calculated UBE2D3 MW:	17 kDa
Observed UBE2D3 MW:	17 kDa
Positive WB detected in	Human brain tissue, HEK-293 cells, HeLa cells, human heart tissue, Jurkat cells
Positive IHC detected in	Human prostate cancer tissue
Recommended dilution:	WB: 1:1000-1:10000 IHC: 1:20-1:200

Application key: WB = Western blotting, IHC = Immunohistochemistry, IF = Immunofluorescence, IP = Immunoprecipitation

Immunogen information

Immunogen:	Ag2278
GenBank accession number:	BC003395
Gene ID (NCBI):	7323
Full name:	Ubiquitin-conjugating enzyme E2D 3 (UBC4/5 homolog, yeast)

Product information

Purification method:	Antigen affinity purification
Storage:	PBS with 0.1% sodium azide and 50% glycerol pH 7.3. Store at -20°C.