



proteintech®

# Flow Cytometry

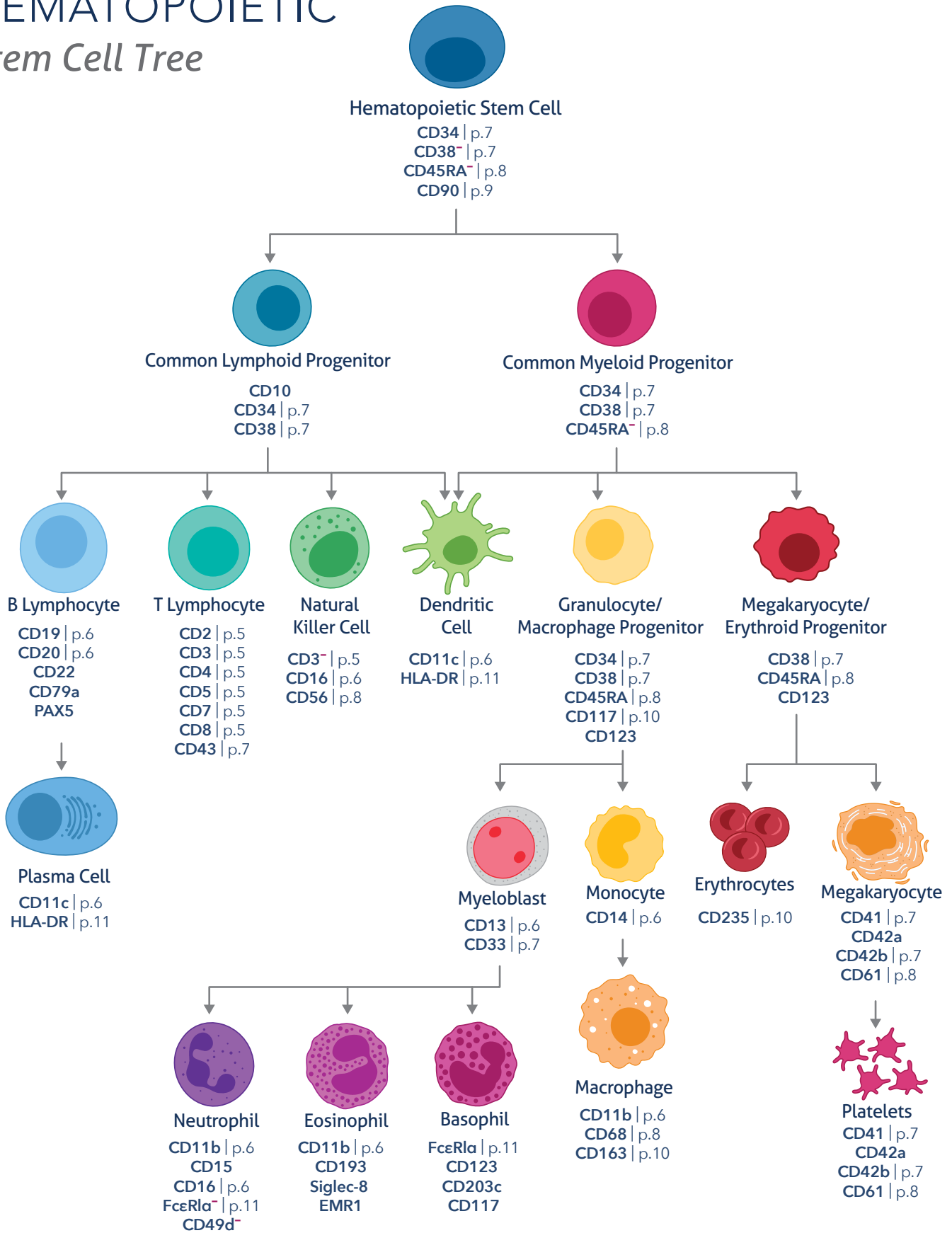
CATALOG

[ptglab.com](http://ptglab.com)

# TABLE OF CONTENTS

Hematopoietic Stem Cell Tree .....	<b>3</b>
Common Dyes for Flow Cytometry .....	<b>4</b>
Antibodies for Extracellular Markers .....	<b>5–11</b>
– CD Markers .....	<b>5</b>
– Other Extracellular Targets .....	<b>11</b>
Isotype Controls .....	<b>12</b>
Antibodies for Intracellular Markers .....	<b>13–18</b>
– Cytokines .....	<b>13</b>
– Transcription Factors and Cell Signaling .....	<b>13</b>
– Common Cell Death Targets .....	<b>17</b>
Supporting Products .....	<b>18–19</b>
– Secondary Antibodies .....	<b>18</b>
– FlexAble Antibody Labeling Kits .....	<b>18</b>
– Cell Death and Viability Dyes .....	<b>19</b>
– Fix and Perm Reagents .....	<b>19</b>
– Cell Separation Products .....	<b>19</b>
Contact Us .....	<b>20</b>

# HEMATOPOIETIC Stem Cell Tree



All Markers listed above are expressed unless followed by a<sup>-</sup>.

# COMMON DYES

## for Flow Cytometry

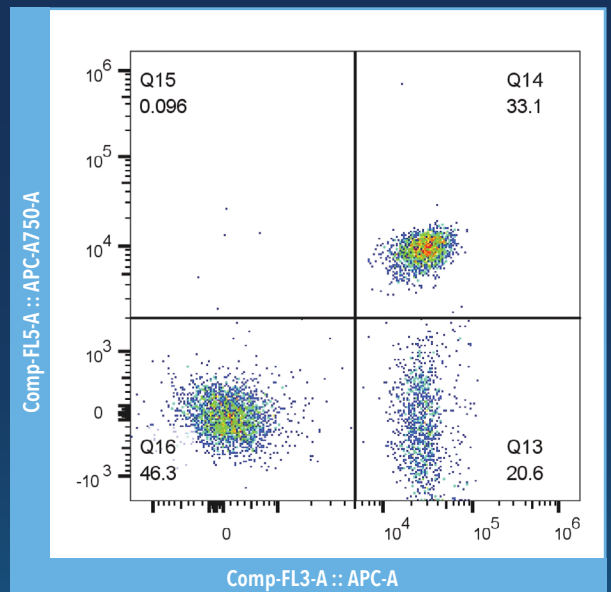
Fluorophore	Fluorescence Color	Max Excitation, nm	Max Emission, nm	Relative Brightness
CoraLite Plus 405	Cyan	399	422	1
Pacific Blue™		410	455	1
CoraLite Plus 488	Green	493	522	3
FITC/FITC Plus		490	525	3
PE	Yellow	490; 565	578	5
CoraLite Plus 555	Orange	554	570	2
CoraLite 594		590	617	4
Texas Red®	Red	596	615	3
APC		650	661	4
CoraLite Plus 647	Magenta	654	674	4
PerCP		490	675	2
CoraLite Plus 750		755	780	3

Pacific Blue and Texas Red are trademarks of ThermoFisher.

# FlexAble

## Antibody Labeling Kits

Any antibody.  
Any color.  
Any time.



Flow cytometry of PBMCs.  $1 \times 10^6$  human peripheral blood mononuclear cells (PBMCs) were stained with anti-CD3 (clone UCHT1, 65151-1-Ig) labeled with FlexAble CoraLite® Plus 647 Kit (KFA023) and anti-CD4 (clone RPA-T4, 65143-1-Ig) labeled with FlexAble CoraLite® Plus 750 Kit (KFA024).



# Antibodies for EXTRACELLULAR MARKERS



For more products

## CD Markers

Cluster of differentiation (CD) markers are cell surface molecules on immune cells. These are specific to cell populations and are used in immunophenotyping by flow cytometry to detect and quantify immune cell subpopulations.

Target	Clone	Reactivity	Catalog No.	Pure	AB/405	FITC/488	PE/555	CR/594	APC/647	750
CD1a	HI149	Human	65172		☆					☆
CD1c	L161	Human	65176		☆	☆				☆
CD1d	1B1	Mouse	65242							
CD2	TS1/8	Human	65192				☆			
CD3	17A2	Mouse	65077							
CD3	Hit3a	Human	65112							
CD3	OKT3	Human	65133							
CD3	SK7	Human	65148		☆					☆
CD3	UCHT1	Human	65151							
CD3ε	145-2C11	Mouse	65060							
CD3ε	500-A2	Mouse	65061							
CD4	GK1.5	Mouse	65104							
CD4	OKT4	Human	65134							
CD4	RM4-5	Mouse	65141							
CD4	RPA-T4	Human	65143		☆					☆
CD4	SK3	Human	65147		☆		☆			☆
CD4	OX-35	Rat	65179							
CD4	RM4-4	Mouse	65199							
CD5	UCHT2	Human	65152		☆					☆
CD5	L17F12	Human	65200							
CD7	4H9	Human	65203							
CD8	SK1	Human	65146		☆					☆
CD8	UCHT4	Human	65204				☆			
CD8α	53-6.7	Mouse	65069							
CD8α	Hit8a	Human	65113		☆		☆			☆
CD8α	OKT8	Human	65135							
CD8α	RPA-T8	Human	65144		☆					☆
CD8α	OX-8	Rat	65180				☆			
CD8α	5H10-1	Mouse	65205							

☆ Fluorophore available through FlexAble antibody labeling kit (p.18)

## EXTRACELLULAR MARKERS

Target	Clone	Reactivity	Catalog No.	Pure	AB/405	FITC/488	PE/555	CR/594	APC/647	750
CD9	MM2/57	Human	65070							
CD11a (Integrin Alpha L)	TS2/4	Human	65194							
CD11a (Integrin Alpha L)	M17/4	Mouse	65177							
CD11b (Integrin Alpha M)	M1/70	Human, Mouse	65055							
CD11b (Integrin Alpha M)	ICRF44	Human	65116							
CD11b (Integrin Alpha M)	OX42	Rat	65229				★			
CD11c (Integrin Alpha X)	3.9	Human	65086							
CD11c (Integrin Alpha X)	N418	Mouse	65130							
CD11c (Integrin Alpha X)	BU15	Human	65196							
CD13	WM15	Human, Non-Human Primates	65186							
CD14	2C1D9	Human, Mouse	60253		★	★	★		★	★
CD14	UCHM-1	Human	65056							
CD14	26IC	Human	65246							
CD16	3G8	Human	65090							
CD16/CD32	93	Mouse	65057							
CD16/CD32	2.4G2	Mouse	65080							
CD18	M18/2	Mouse	65178							
CD18	TS1/18	Human	65190							
CD19	HIB19	Human	65110		★					★
CD19	4G7	Human	65197							
CD20	2H7	Human	65085							
CD20 (Intracellular)	4A7G3	Human	60271							
CD21	BU32	Human	65198							
CD23 (Intracellular)	4C7C9	Human	60208			★	★		★	
CD24	M1/69	Mouse	65121							
CD24 (Intracellular)	1H5C4	Human	67627		★	★	★		★	★
CD25 (IL-2Rα)	BC96	Human	65096		★					★
CD25 (IL-2Rα)	PC61.5	Mouse	65137							
CD26	BA5b	Human	65267							
CD27	O323	Human	65132							
CD27 (Intracellular)	1C1G3	Human	66308		★	★	★		★	★
CD28	CD28.2	Human	65099							

## EXTRACELLULAR MARKERS

Target	Clone	Reactivity	Catalog No.	Pure	AB/405	FITC/488	PE/555	CR/594	APC/647	750
CD29 (Integrin Beta 1)	TS2/16	Human	65191							
CD29 (Integrin Beta 1) (Intracellular)	1A7C9	Human	66315		☆	☆	☆		☆	☆
CD31	390	Mouse	65058							
CD31	3F8E2	Human	66065		☆		☆		☆	☆
CD31	WM-59	Human	65268							
CD32a (FCGR2A) (Intracellular)	1D3F1	Human	66529				☆			
CD33	WM53	Human	65272		☆		☆		☆	☆
CD34	QEnd-10	Human, Non-Human Primates	65183							
CD35	E11	Human	65254							
CD38	90	Mouse	65059							
CD38	HB7	Human	65107		☆					☆
CD38	HIT2	Human	65111		☆					☆
CD38 (Intracellular)	3C6G4	Human, Mouse	60006		☆		☆		☆	☆
CD39 (ENTPD1) (Intracellular)	2D2H6	Human	60323				☆		☆	
CD40	1C10	Mouse	65062							
CD40	G28.5	Human	65103		☆		☆			☆
CD40L/CD154 (Intracellular)	1E6D10	Human	66502				☆		☆	
CD41	MWReg30	Mouse	65189							
CD41a	HIP8	Human, Non-Human Primates	65173		☆	☆	☆		☆	☆
CD42b	AK2	Human	65163							
CD43	W3/13	Rat	65237				☆			☆
CD44	F10-44-2	Human	65063							
CD44	IM7	Human, Mouse	65117							
CD45	F10-89-4	Human	65064							
CD45	2D1	Human	65082		☆					☆
CD45	30-F11	Mouse	65087							
CD45	HI30	Human	65109		☆					☆
CD45	OX1	Rat	65228				☆			☆
CD45 (Intracellular)	4E9B2	Human, Pig, Mouse, Rat	60287			☆			☆	
CD45.1	A20	Mouse	65092							
CD45.2	104	Mouse	65072							

☆ Fluorophore available through FlexAble antibody labeling kit (p.18)

## EXTRACELLULAR MARKERS

Target	Clone	Reactivity	Catalog No.	Pure	AB/405	FITC/488	PE/555	CR/594	APC/647	750
CD45R (B220)	RA3-6B2	Human, Mouse	65139							
CD45RA	HI100	Human	65108							
CD45RA	F8-11-13	Human	65226							
CD45RA	OX-33	Rat	65234		★	★	★		★	★
CD45RO	UCHL1	Human	65150							
CD47 (IAP)	Polyclonal	Human	29555		★					★
CD48	HM48-1	Mouse	65227							
CD49b	DX5	Mouse	65065							
CD49b	HMa2	Mouse	65245							
CD49b	AK7	Human	65252							
CD49c (Integrin Alpha 3) (Intracellular)	3F9G4	Human, Mouse, Pig	66070			★	★		★	
CD49f (Integrin Alpha 6) (Intracellular)	2B12A1	Human	66906							
CD54 (ICAM-1)	2F9A8	Human	60299							
CD54 (ICAM-1)	YN1/1.7.4	Mouse	65066							
CD54 (ICAM-1)	15.2	Human	65075							★
CD55	JS11	Human	65271		★	★	★		★	★
CD56 (NCAM1)	MEM-188	Human	65067			★			★	
CD56 (NCAM1)	B-A19	Human	65264		★		★			★
CD58	TS2/9	Human	65193		★		★			
CD61	VIPL2	Human, Non-Human Primates	65185		★					★
CD62L (L-selectin)	MEL-14	Mouse	65123							
CD62L (L-selectin)	DREG56	Human	65167				★			
CD62P	AK4	Human, Non-Human Primates	65164							★
CD63 (Intracellular)	Polyclonal	Human	25682		★		★		★	★
CD64	10.1	Human	65253							
CD68 (Intracellular)	Polyclonal	Human, Mouse	25747		★		★		★	★
CD68 (Intracellular)	Y1/82A	Human	65187							
CD68 (Intracellular)	KP1	Human	65202							
CD69	H1.2F3	Mouse	65105							
CD71	OKT9	Human	65235				★			
CD72	3F3	Human	65157							

## EXTRACELLULAR MARKERS

Target	Clone	Reactivity	Catalog No.	Pure	AB/405	FITC/488	PE/555	CR/594	APC/647	750
CD73 (NT5E)	AD2	Human	65162							
CD80 (B7-1)	16-10A1	Mouse	65076							
CD80 (B7-1)	2D10.4	Human	65083		☆	☆				☆
CD80 (B7-1)	3H5	Rat	65217		☆		☆			☆
CD81	5A6	Human	65195		☆		☆			☆
CD81	EAT2	Mouse	65220							
CD81 (Intracellular)	1G2C6	Human	66866		☆		☆		☆	☆
CD83	HB15e	Human, Non-Human Primates	65171		☆					☆
CD85j (LILRB1)	GHI/75	Human	65238							
CD86	GL1	Mouse	65068							
CD86	IT2.2	Human	65118							
CD86	BU63	Human	65165							
CD90.2	30-H12	Mouse	65088							
CD91 (LRP1)	5A6	Human	65233							
CD94	18D3	Mouse	65240				☆			
CD95 (FAS)	DX2	Human	65071		☆					☆
CD96	NK92.39	Human	65250							
CD101 (IGSF2) (Intracellular)	1E6A7	Human, Mouse	66333		☆	☆	☆		☆	☆
CD102 (ICAM2) (Intracellular)	1H3C6	Human	67628				☆		☆	
CD103	2E7	Mouse	65047							
CD105 (Endoglin)	MJ7/18	Mouse	65048							
CD105 (Endoglin) (Intracellular)	2D5E8	Human	67075							
CD106 (VCAM-1)	1.G11B1	Human	65049		☆				☆	☆
CD107a (LAMP1) (Intracellular)	Polyclonal	Human	21997		☆		☆		☆	☆
CD107a (LAMP1) (Intracellular)	1D4B	Mouse	65050							
CD107a (LAMP1) (Intracellular)	H4A3	Human	65051							
CD107b (LAMP2) (Intracellular)	ABL-93	Mouse	65052							
CD107b (LAMP2) (Intracellular)	H4B4	Human	65053							

☆ Fluorophore available through FlexAble antibody labeling kit (p.18)

## EXTRACELLULAR MARKERS

Target	Clone	Reactivity	Catalog No.	Pure	AB/405	FITC/488	PE/555	CR/594	APC/647	750
CD115 (c-fms)	AFS98	Mouse	65095							
CD116	4H1	Human	65160		★	★			★	★
CD117 (c-Kit)	2B8	Mouse	65054							
CD117 (c-Kit)	ACK2	Mouse	65094							
CD117 (c-Kit)	104D2	Human, Bovine	65154		★	★				★
CD120a	H398	Human	65170							
CD124 (IL-4R) (Intracellular)	1E4C11	Human	67051		★		★		★	★
CD127 (IL-7Ra)	A7R34	Mouse	65093							
CD134	OX-86	Mouse	65136							
CD137 (4-1BB)	4B4-1	Human, Non-Human Primates	65159		★	★				★
CD146 (MCAM)	P1H12	Human, Mouse, Rabbit, Canine	65181		★	★			★	★
CD146 (MCAM) (Intracellular)	4D8A9	Human	66153		★	★	★		★	★
CD147 (Intracellular)	1G12B5	Human, Pig	66443		★		★		★	★
CD154 (CD40L)	MR1	Mouse	65129							
CD154 (CD40L)	24-31	Human, Non-Human Primates	65156		★				★	★
CD155	SKII.4	Human	65251		★	★	★		★	★
CD161 (NK1.1)	HP-3G10	Human	65115		★					★
CD161 (NK1.1)	PK136	Mouse	65138							
CD163	GHI/61	Human	65169		★					★
CD166 (ALCAM)	3A6	Human	65223							
CD197	4B12	Mouse	65158							
CD206	15-2	Human	65155		★					★
CD212 (IL-12RB1) (Intracellular)	1E10E10	Human	66829		★		★		★	★
CD223 (LAG-3)	C9B7W	Mouse	65098							
CD225 (IFITM1-Specific) (Intracellular)	5B5E2	Human	60074			★	★		★	
CD226	11A8	Human	65247							
CD235a	HIR2	Human	65174							
CD274 (PD-L1)	10F.9G2	Mouse	65073							



## EXTRACELLULAR MARKERS

Target	Clone	Reactivity	Catalog No.	Pure	AB/405	FITC/488	PE/555	CR/594	APC/647	750
CD274 PD-L1 (B7-H1)	29E.2A3	Human	65081							
CD275 (B7-H2)	HK5.3	Mouse	65114							
CD276	MJ18	Mouse	65221							
CD279 (PD-1)	J110	Human	65119		★					★
CD279 (PD-1)	J43.1	Mouse	65120							
CD279 (PD-1)	RMP1-30	Mouse	65142							
CD279 (PD-1)	EH12.2H7	Human, Non-Human Primates	65168							
CD279 (PD-1)	4H4D1	Human, Mouse, Rat	66220							
CD300A	2F9C5	Human	67242		★		★		★	★
CD314 (NKG2D)	1D11	Human	65188		★					★
CD324 (E-cadherin)	DECMA-1	Mouse	65241							
CD326 (EPCAM)	Polyclonal	Human, Mouse	21050		★				★	★
CD357	DTA-1	Mouse	65102							

## Other Extracellular Targets

Target	Clone	Reactivity	Catalog No.	Pure	AB/405	FITC/488	PE/555	CR/594	APC/647	750
FceR1	MAR-1	Mouse	65091							
HLA class I ABC	Polyclonal	Human	15240		★				★	★
HLA class I ABC	5C5B7	Human, Pig	66013							
HLA-DR	L243	Human	65218							
Integrin beta-7	FIB504.64	Mouse	65213							
KLRG1	2F1	Mouse	65084							
LPAM-1	DATK32	Mouse	65101							
Ly-6G (Gr-1)	1A8	Mouse	65078							
Ly-6G (Gr-1)	RB6-8C5	Mouse	65140							
MHC Class II (I-A/I-E)	M5/114.15.2	Mouse	65122							
MICA/MICB	6D4	Human	65161							
Panendothelial Cell Antigen/PLVAP	MECA-32	Mouse	65214							
STRO-1	STRO-1	Human	65184							
TCR beta	H57-597	Mouse	65106							
TER-119	TER-119	Mouse	65149							
TIGIT	1G9	Mouse	65079							

★ Fluorophore available through FlexAble antibody labeling kit (p.18)

# ISOTOPE CONTROLS

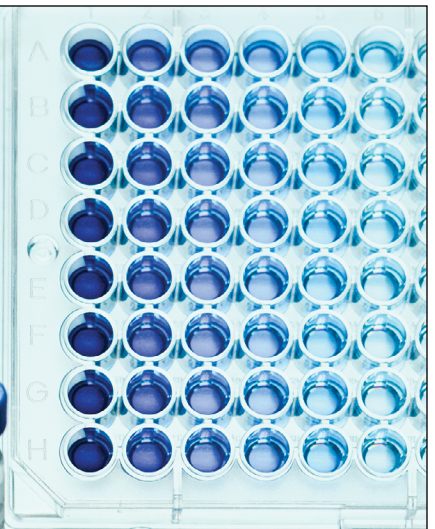
Isotype controls are antibodies raised against antigens that are not present in cells, and are used as a form of negative control, in place of the target antibody, to assess the level of non-specific binding. These controls should be the same host, class, and subclass, and conjugated to the same fluorophore as the target antibody.

Isotype	Clone	Catalog No.	Pure	AB/405	FITC/488	PE/555	CR/594	APC/647	750
Armenian Hamster IgG	PIP	65210							
Mouse IgG1	MOPC-21	65124							
Mouse IgG1	1F8D3	66360-1							
Mouse IgG2a	C1.18.4	65208							
Mouse IgG2ak	MOPC-173	65244							
Mouse IgG2a	11A1B2	66360-2							
Mouse IgG2b	MPC-11	65128							
Mouse IgG2b	11B8C4	66360-3							
Mouse IgG3	1H4A5	66360-4							
Mouse IgM	MOPC-104e	65243							
Rat IgG1	HRPN	65212							
Rat IgG2a	2A3	65209							
Rat IgG2b	LTF-2	65211							
Rabbit IgG	Polyclonal	30000							
Human IgD	IA6-2	65175							

humankine®

## GMP Grade Cytokines and Growth Factors

- ✓ Animal component-free
- ✓ Endotoxin-free
- ✓ Xeno-free
- ✓ Tag-free
- ✓ Carrier-free



# Antibodies for INTRACELLULAR MARKERS



For more products

## Cytokines

Cytokines are significant cell signaling molecules that can be analyzed by flow cytometry. They are stained intracellularly and can be detected in combination with surface marker staining. Cytokine profiling by flow cytometry can characterize the inflammatory state of specific immune cell subsets.

Target	Clone	Reactivity	Catalog No.	Pure	AB/405	FITC/488	PE/555	CR/594	APC/647	750
IFN gamma	XMG1.2	Mouse	65153							
IFN gamma	1E10G7	Human	69007		☆					☆
IL-4	11B11	Mouse	65074							
IL-4	1G2C5	Human	66142		☆	☆	☆			☆
IL-6	4G3E6	Human	69001		☆		☆			☆
IL-12/IL-23 p40	C17.8	Mouse	65097							
IL-17	3605	Human, Mouse	66148		☆	☆	☆		☆	☆
IL-18	Polyclonal	Human	10663		☆	☆	☆		☆	☆
IL-18	5C6F8	Human	60070							
TGF Beta 1	Polyclonal	Human, Mouse, Rat	21898		☆	☆	☆		☆	☆
TGF Beta 1	1E3E9	Human	69012		☆					☆
TNF Alpha	11H8A5	Human	69002							

## Transcription Factors and Cell Signaling

Transcription factors and other cell signaling molecules are critical targets for understanding the functional activity of a cell. They can be used alongside CD markers to analyze the functional profile of specific cell types within a heterogenous population.

Target	Clone	Reactivity	Catalog No.	Pure	AB/405	FITC/488	PE/555	CR/594	APC/647	750
AATF	2A6G6	Human, Mouse, Rat	67868		☆		☆		☆	☆
AHR	2D1F9	Human, Rat	67785							
ARNT,HIF1B	3B12C5	Human	66732		☆	☆	☆		☆	☆
AKT	2C5D1	Human, Mouse, Rat	60203-2		☆	☆	☆		☆	☆
Phospho-AKT (Ser473)	1C10B8	Human, Mouse, Rat	66444		☆					☆
Phospho-AKT (Ser473)	2E17	Human	80455		☆					☆
Phospho-AKT1 (Ser473)	2M10	Human, Mouse	80462		☆					☆

☆ Fluorophore available through FlexAble antibody labeling kit (p.18)

## INTRACELLULAR MARKERS

Target	Clone	Reactivity	Catalog No.	Pure	AB/405	FITC/488	PE/555	CR/594	APC/647	750
ASGR1	Polyclonal	Human, Mouse, Rat	11739		★				★	★
ASGR2	Polyclonal	Human	11501		★	★	★		★	★
ATF4	3E4C5	Human	60035		★		★		★	★
ATG5	Polyclonal	Human, Mouse, Rat	10181		★		★		★	★
BCL6	1E6B1	Human	66340		★		★			★
BCLAF1	1D6G7	Human, Mouse, Rat	67860		★		★		★	★
Beta Catenin	1B8A1	Human, Mouse, Rat, Pig	66379		★		★		★	★
Phospho-Beta Catenin (Ser33)	3K1	Human, Mouse, Rat	80067		★		★			★
BMP-7	3E9G7	Human	69011		★	★	★			★
c-Fos	1G2C5	Human, Mouse, Rat	66590		★		★		★	★
c-MYC	3D9C12	Human, Mouse, Rat	67447		★		★			★
C1QBP	1F9B1	Human, Mouse	68084							
C1QBP	3K20	Human, Mouse, Rat	80490		★		★		★	★
Caspase 9/p35/p10	Polyclonal	Human, Mouse, Rat	10380		★					★
Phospho-Caspase 9 (Ser196)	3P16	Human, Mouse	80346							
CBFB	1D7F2	Human	67885		★		★		★	★
CHOP; GADD153	Polyclonal	Human, Mouse, Rat	15204		★	★	★		★	★
CLEC14A	Polyclonal	Human, Mouse	23964		★	★	★		★	★
COLEC11	Polyclonal	Human, Mouse, Rat	15269		★	★	★		★	★
CRCP	Polyclonal	Human, Mouse, Rat	14348		★					★
CREB3L1, OASIS	2B5B4	Human, Mouse, Rat	67617		★		★		★	★
CXCR3B-specific	1B2D6	Human	60065							
CXCR4	4B5E4	Human, Mouse	60042							
DDX3	1D3A1	Human, Rat	67915							
Phospho-EIF2S1 (Ser51)	1A4A11	Human, Mouse, Rat	68023		★		★		★	★
ERK1/2	4G8A11	Human, Mouse	66192							

## INTRACELLULAR MARKERS

Target	Clone	Reactivity	Catalog No.	Pure	AB/405	FITC/488	PE/555	CR/594	APC/647	750
ERK1/2	1A3D3	Human, Mouse, Rat	67170							
FOXO1	Polyclonal	Human, Mouse, Rat	18592		★		★			★
Foxp3	3G3	Mouse	65089		★					★
GATA1	5E2A8	Human, Mouse, Rat, Pig	60011		★				★	★
GATA2	2B5A1	Human, Mouse	67722		★		★		★	★
Phospho-GSK3B (Ser9)	1C9E2	Human	67558							
Phospho-Hamartin/TSC1 (Ser511)	3N6	Human, Mouse	80340		★					★
HER2/ErbB2	1B12A7	Human	60311							
HIF-1 alpha	Polyclonal	Human	20960		★	★	★			★
Phospho-Histone H3 (Ser10)	4C7G2	Human, Rat, Mouse, Pig	66863		★		★			★
HMGB1	Polyclonal	Human, Mouse, Rat	10829		★	★	★		★	★
IκB Alpha	Polyclonal	Human, Mouse, Pig, Rat	10268		★	★	★		★	★
IRAK1	Polyclonal	Human, Mouse, Rat	10478		★					★
IRF1	Polyclonal	Human, Mouse, Rat	11335		★		★		★	★
IRF3	Polyclonal	Human	11312		★				★	★
ITCH	2E3G9	Human, Mouse, Rat	67757							
JNK	1A12E1	Human, Mouse, Rat	66210		★		★		★	★
KLF5	2C11C5	Human, Mouse	66850		★		★		★	★
MAP2K4	2E4C1	Human	67333							
Phospho-MEK1 (Thr292)	2D7A8	Human, Mouse, Rat	67873							
MEK6	Polyclonal	Human, Mouse	12745		★		★			★
MITF	Polyclonal	Human, Mouse, Rat	13092		★	★	★			★
Phospho-MST1 (Thr183)/MST2 (Thr180)	1P6	Human	80093		★		★			★
Phospho-mTOR (Ser2448)	3L18	Human, Rat	80596							
Phospho-mTOR (Ser2448)	2A12G3	Human, Mouse	67778							

☆ Fluorophore available through FlexAble antibody labeling kit (p.18)

## INTRACELLULAR MARKERS

Target	Clone	Reactivity	Catalog No.	Pure	AB/405	FITC/488	PE/555	CR/594	APC/647	750
MUM1/IRF4	Polyclonal	Human	11247		★					★
MYOD1	Polyclonal	Human, Mouse, Rat	18943		★	★	★		★	★
NEUROD1	3E10F1	Human	66691		★		★		★	★
NFKB1	2G1E3	Human, Mouse	66992			★	★		★	
NF-κB p65	Polyclonal	Human	10745		★		★			★
NRF1	3C2B8	Human, Mouse, Rat	66832							
NRF2, NFE2L2	Polyclonal	Human, Mouse, Rat	16396		★		★		★	★
OCT4	Polyclonal	Human, Mouse, Rat	11263		★		★		★	★
OLR1	Polyclonal	Human	11837		★	★	★		★	★
OPTN	Polyclonal	Human, Mouse, Rat	10837		★		★			★
P53	2H13	Human, Mouse, Rat	80077		★					★
P53	6C4B6	Human, Mouse, Rat	60283							
Phospho-P53 (Ser15)	1H6G1	Human	67826		★					★
Phospho-P53 (Ser46)	1D10A12	Human	67900		★		★		★	★
RELB	Polyclonal	Human, Rat	25027		★		★			★
Phospho-RIPK1 (Ser161)	1B2G1	Human	66854							
Phospho-RPS6 (Ser235)	2A4B6	Human, Mouse, Rat	67898							
Phospho-RPS6KA1 (Ser380)	7F23	Human, Mouse	80108		★		★			★
Phospho-S6 Ribosomal protein (Ser236)	7K17	Human	80206							
SFTPA1	Polyclonal	Human	11850		★	★	★		★	★
SMAD5	Polyclonal	Human, Mouse, Rat	12167		★	★	★		★	★
SOX10	1D2C8	Human, Rat	66786						★	
SOX2	4B9B10	Human, Pig, Mouse, Rat	66411		★	★	★			★
SOX9	1H9A6	Human, Mouse	67439		★	★	★		★	★
SRC	Polyclonal	Human, Mouse, Rat, Hamster	11097		★	★	★		★	★
STAT1	Polyclonal	Human, Rat	10144		★		★			★
STAT3	Polyclonal	Human, Mouse, Rat	10253		★		★			★



## INTRACELLULAR MARKERS

Target	Clone	Reactivity	Catalog No.	Pure	AB/405	FITC/488	PE/555	CR/594	APC/647	750
STAT4	4A8C9	Human, Mouse, Rat	67568		★		★		★	★
STAT5A	Polyclonal	Human, Mouse, Rat	13179		★	★	★		★	★
Phospho-STAT5A (Tyr694)	2P21	Human	80115							
STAT5B	1D9B11	Human	66427				★		★	
Phospho-STK11/LKB1 (Thr189)	5J9	Human, Mouse	80127		★					★
TAB2	Polyclonal	Human, Mouse, Rat	14410		★	★	★		★	★
TCF12	1B8D4	Human, Mouse, Rat	67523				★		★	
Phospho-TDP43 (Ser403/404)	6B11B12	Human, Mouse	66079			★	★		★	
Phospho-TDP43 (Ser409/410)	6M10	Human, Mouse	80007		★		★			★
TICAM2	Polyclonal	Human	19524		★	★	★		★	★
TLR3	Polyclonal	Human, Mouse	17766		★	★	★		★	★
TLR5	Polyclonal	Human, Mouse	19810		★	★	★		★	★
TMEM173/STING	Polyclonal	Human, Mouse, Rat	19851		★		★		★	★
TNFAIP3	3A11G6	Human, Rat	66695		★		★		★	★
ubiquitin	Polyclonal	Human, Mouse, Rat	10201		★		★		★	★
Phospho-ULK1 (Ser556)	2F5	Human, Mouse	80218		★	★	★		★	★
VEGFA	Polyclonal	Human, Mouse	19003		★		★		★	★
VEGFA	2E2H9	Human	66828							

## Common Cell Death Targets

Cell death is a fundamental process that plays critical roles in the physiology and pathology of multicellular organisms. Cell death can be regulated through precise signaling pathways or accidental, a result of unexpected cellular injury. Flow cytometry enables cell death mechanisms to be studied within cellular sub-populations through the simultaneous analysis of cell type specific markers and cell death markers.

Target	Reactivity	Catalog No.	Pure	AB/405	FITC/488	PE/555	CR/594	APC/647	750
AIFM2	Human, Mouse	68049		★		★		★	★
Annexin V	Human	66245		★	★	★			★
ATG13	Human, Mouse, Rat, Pig	66708		★		★		★	★
ATG7	Human, Mouse, Rat, Pig	67341			★	★		★	
BAX	Human, Mouse, Rat	60267							

☆ Fluorophore available through FlexAble antibody labeling kit (p.18)

Target	Reactivity	Catalog No.	Pure	AB/405	FITC/488	PE/555	CR/594	APC/647	750
BCL2	Human, Pig	60178							
BCL2	Mouse	66799		★					★
Bcl-XL	Human, Mouse, Rat	66020							
Cathepsin D	Human	66534							
CCAR2	Human, Pig	66497			★	★		★	
c-MYC	Human, Mouse, Rat	67447		★		★			★
Cytochrome c	Human, Mouse, Rat	66264			★	★		★	
FAS/CD95	Human	60196		★	★	★		★	★
Galectin-3	Human, Mouse, Rat	60207							
GRP78/BIP	Human, Mouse, Rat	66574		★	★	★			★
HSP27	Human	66767		★		★			★
HSP60	Human, Mouse, Rat	66041		★		★		★	★
HSPB3	Human, Mouse, Rat, Rabbit	67890							
ING2	Human, Mouse, Rat	66512		★		★		★	★
ITM2C	Human	60095			★	★		★	
Phospho-RIPK1	Human, Mouse	66854							

## SUPPORTING PRODUCTS

### Secondary Antibodies

Proteintech offers a growing portfolio of secondary antibodies:

- High quality ensuring lot-to-lot consistency
- High specificity and sensitivity
- Available for a range of applications

<b>Species Reactivities</b>	Anti-mouse, Anti-rabbit, Anti-goat, Anti-rat, Anti-human, Anti-chicken, Anti-guinea pig, Anti-horse, Anti-sheep, Anti-swine
<b>Conjugates</b>	Alexa Fluor® 488, Alexa Fluor® 568, Alexa Fluor® 647, AMCA, AP, Biotin, CoraLite® 488, CoraLite® 594, CoraLite® 647, Cy3, FITC, HRP, R-PE, TRITC
<b>Applications</b>	Western Blot, Immunofluorescence, Immunohistochemistry, ELISA, Flow Cytometry

Alexa Fluor® is a registered trademark of Life Technologies Corporation.

### FlexAble Antibody Labeling Kits

FlexAble is a novel antibody labeling kit that uses an affinity linker to conjugate fluorochromes, enzymes, and molecules in any buffer condition. Suitable for single or multiplex staining.

	CoraLite® Plus 405	CoraLite® Plus 488	FITC Plus	CoraLite® Plus 555	CoraLite® Plus 647	CoraLite® Plus 750
<b>Rabbit IgG</b>	KFA006	KFA001	KFA008	KFA002	KFA003	KFA004
<b>Mouse IgG1</b>	KFA026	KFA021	KFA028	KFA022	KFA023	KFA024
<b>Mouse IgG2a</b>		KFA041		KFA042	KFA043	

# SUPPORTING PRODUCTS

## Cell Death and Viability Dyes

Dead cells in your sample can stain non-specifically, causing inaccurate results. Viability dyes stain dead or dying cells, allowing you to gate them out during analysis.

Catalog No.	Product Name
PD00003	Phantom Dye UV 450 Viability Dye
PD00004	Phantom Dye Violet 450 Viability Dye
PD00005	Phantom Dye Violet 510 Viability Dye
PD00006	Phantom Dye Violet 540 Viability Dye
PD00007	Phantom Dye Blue 516 Viability Dye
PD00001	Phantom Dye Red 710 Viability Dye
PD00002	Phantom Dye Red 780 Viability Dye
PF00005	CoraLite®488-Annexin V and PI Apoptosis Kit
PF00006	CoraLite®488 TUNEL Assay Apoptosis Detection Kit
PF00009	CoraLite®594 TUNEL Assay Apoptosis Detection Kit
PF00007	Viability/Cytotoxicity Assay Kit for Animal Live & Dead Cells (Calcein AM, PI Method)
PF00008	Viability/Cytotoxicity Assay Kit for Animal Live & Dead Cells (Calcein AM, EthD-1 Method)

## Fix and Perm Reagents

Fix and perm reagents allow for investigation of intracellular and nuclear targets with flow cytometry. We're proud to offer you the same buffers that we use in-house for our flow cytometry product validation, from our bench to your bench™.

Catalog No.	Product Name
PF00011-C	Flow Cytometry Perm Buffer (10X)
PF00012	Flow Cytometry Staining Buffer (1X)
PF00011	Foxp3 / Transcription Factor Staining Buffer Kit
PF00011-A	Foxp3 / Transcription Factor Fix/Perm Concentrate (4X)
PF00011-B	Foxp3 / Transcription Factor Fix/Perm Diluent (1X)
PF00013	RBC Lysis Buffer (10x)

## Magnetic Cell Separation Kits

Proteintech's magnetic cell separation systems use highly specific, high-affinity antibodies (or streptavidin) covalently conjugated to supramagnetic polystyrene particles for quick, easy, column-free cell depletions and isolations.

Catalog No.	Product Name
KMS001	Human CD3 Magnetic Beads Kit
KMS002	Human CD4 Magnetic Beads Kit
KMS003	Human CD8 Magnetic Beads Kit
KMS004	Human CD19 Magnetic Beads Kit
KMS005	Human CD14 Magnetic Beads Kit
KMS006	Human CD16 Magnetic Beads Kit
KMS007	Human CD11b Magnetic Beads Kit
MS002	Human CD3 Magnetic Beads
MS003	Human CD4 Magnetic Beads
MS004	Human CD8 Magnetic Beads
MS005	Human CD19 Magnetic Beads
MS006	Human CD14 Magnetic Beads
MS007	Human CD16 Magnetic Beads
MS008	Human CD11b Magnetic Beads
KMS302	Human CD4 Isolation Kit
KMS303	Human CD8 Isolation Kit
KMS305	Human CD4 Memory T Cell Isolation Kit
KMS307	Human CD8 Memory T Cell Isolation Kit
KMS308	Human NK Cell Isolation Kit
KMS309	Human CD3 T Cell Isolation Kit
KMS301	Mouse Lineage Depletion Kit
KMS310	Human CD3/CD28 T cell Activation Beads Kit
MS001	Streptavidin Magnetic Beads



# CONTACT US

## **Proteintech Group, Inc.** *(HQ in North America)*

5500 Pearl Street, Ste 400  
Rosemont, IL 60018, USA

**P** +1 (888) 478-4522 (toll free in USA)

**F** +1 (773) 598-4321

+1 (847) 928-2189

**E** [proteintech@ptglab.com](mailto:proteintech@ptglab.com)

**ptglab.com**

## **Proteintech Europe**

**P** +44 161 839 3007

**F** +44 161 241 3103

**E** [europe@ptglab.com](mailto:europe@ptglab.com)

## **Proteintech China**

**E** [proteintech-CN@ptglab.com](mailto:proteintech-CN@ptglab.com)

## **Proteintech Singapore**

**P** +65 9785 0861

**E** [singapore@ptglab.com](mailto:singapore@ptglab.com)

