

TWF1 Polyclonal Antibody

Catalog number: 11732-1-AP

Size: 20 µg/150 µl

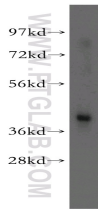
Source: Rabbit

Isotype: IgG

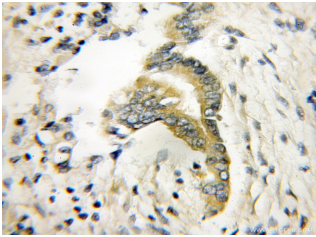
Synonyms:

TWF1; A6; MGC23788;

MGC41876; PTK9



mouse testis tissue were subjected to SDS PAGE followed by western blot with 11732-1-AP(TWF1 Antibody) at dilution of 1:600



Immunohistochemistry of paraffin-embedded human pancreas cancer using 11732-1-AP(TWF1 Antibody) at Dilution 1:50 (under 10x lens)

Applications

Tested applications:	ELISA, WB, IHC
Species specificity:	Human, mouse, rat; other species not tested.
Positive WB detected in:	Mouse testis tissue, NIH/3T3 cells
Calculated TWF1 MW:	368aa,42kd
Observed TWF1 MW:	42kd
Positive IHC detected in:	Human pancreas cancer
Recommended dilution:	WB: 1:200-1:2000 IHC: 1:20-1:200

Application key: WB = Western blotting, IHC = Immunohistochemistry, IF = Immunofluorescence, IP = Immunoprecipitation, FC = Flow cytometry

Immunogen information

Immunogen:	Ag2332
GenBank accession number:	BC022344
Gene ID (NCBI):	5756
Full name:	Twinfilin, actin-binding protein, homolog 1 (Drosophila)

Product information

Purification method:	Antigen affinity purification
Storage:	PBS with 0.1% sodium azide and 50% glycerol pH 7.3. Store at -20°C.