

## PIBF1 Polyclonal Antibody

Catalog number: 14413-1-AP

Size: 35 µg/150 µl

Source: Rabbit

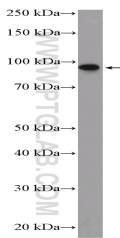
Isotype: IgG

Synonyms:

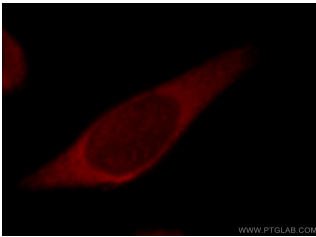
PIBF1; C13orf24, CEP90,

KIAA1008, PIBF, PIBF1, RP11

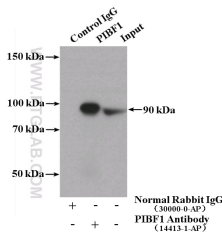
505F3.1



HeLa cells were subjected to SDS PAGE followed by western blot with 14413-1-AP (PIBF1 Antibody) at dilution of 1:1000



Immunofluorescent analysis of MCF-7 cells, using PIBF1 antibody 14413-1-AP at 1:25 dilution and Rhodamine-labeled goat anti-rabbit IgG (red).



IP Result of anti-PIBF1 (IP:14413-1-AP, 4µg; Detection:14413-1-AP 1:500) with HEK-293 cells lysate 1120µg.

### Applications

Tested applications:	ELISA, IF, WB, IP
Cited applications:	IF, IP, WB
Species specificity:	Human, Mouse, Rat; other species not tested.
Cited species:	Human
Calculated PIBF1 MW:	90 kDa
Observed PIBF1 MW:	90 kDa
Positive WB detected in	HeLa cells, HEK-293 cells, K-562 cells, MCF7 cells
Positive IP detected in	HEK-293 cells
Positive IF detected in	MCF-7 cells
Recommended dilution:	WB: 1:500-1:5000 IP: 1:200-1:2000 IF: 1:10-1:100

Application key: WB = Western blotting, IHC = Immunohistochemistry, IF = Immunofluorescence, IP = Immunoprecipitation

### Immunogen information

Immunogen:	Ag5755
GenBank accession number:	BC051911
Gene ID (NCBI):	10464
Full name:	Progesterone immunomodulatory binding factor 1

### Product information

Purification method:	Antigen affinity purification
Storage:	PBS with 0.02% sodium azide and 50% glycerol pH 7.3. Store at -20°C.