

COPE Polyclonal Antibody

Catalog number: 11457-1-AP

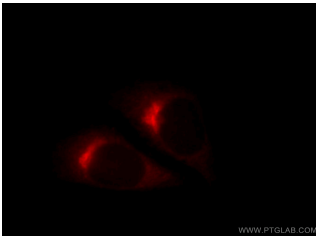
Size: 20 µg/150 µl

Source: Rabbit

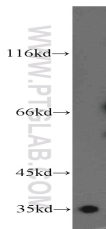
Isotype: IgG

Synonyms:

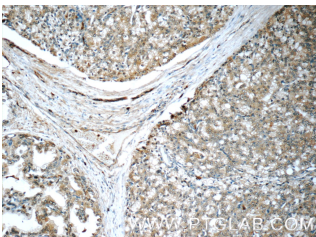
COPE; Coatomer subunit
epsilon, COPE, Epsilon coat
protein, epsilon COP, FLJ13241



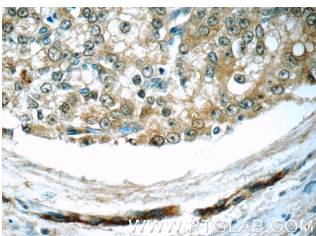
Immunofluorescent analysis of HepG2 cells, using COPE antibody 11457-1-AP at 1:25 dilution and Rhodamine-labeled goat anti-rabbit IgG (red).



PC-3 cells were subjected to SDS PAGE followed by western blot with 11457-1-AP(COPE antibody) at dilution of 1:500



Immunohistochemistry of paraffin-embedded human prostate cancer tissue slide using 11457-1-AP(COPE Antibody) at dilution of 1:50 (under 10x lens)



Immunohistochemistry of

Applications

Tested applications:	ELISA, WB, IF, IHC
Species specificity:	Human; other species not tested.
Calculated COPE MW:	34 kDa
Observed COPE MW:	36 kDa
Positive WB detected in	PC-3 cells, A431 cells, HEK-293 cells
Positive IHC detected in	Human prostate cancer tissue, human liver cancer tissue
Positive IF detected in	HepG2 cells
Recommended dilution:	WB: 1:200-1:2000 IHC: 1:20-1:200 IF: 1:10-1:100

Application key: WB = Western blotting, IHC = Immunohistochemistry, IF = Immunofluorescence, IP = Immunoprecipitation

Immunogen information

Immunogen:	Ag2024
GenBank accession number:	BC017285
Gene ID (NCBI):	11316
Full name:	Coatomer protein complex, subunit epsilon

Product information

Purification method:	Antigen affinity purification
Storage:	PBS with 0.1% sodium azide and 50% glycerol pH 7.3. Store at -20°C.

paraffin-embedded human
prostate cancer tissue slide
using 11457-1-AP(COPE
Antibody) at dilution of 1:50
(under 40x lens)