

## RSU1 Polyclonal Antibody

Catalog number: 11207-1-AP

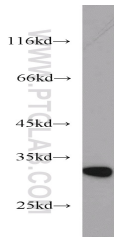
Size: 41 µg/150 µl

Source: Rabbit

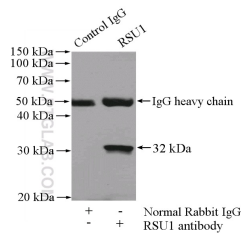
Isotype: IgG

Synonyms:

RSU1; FLJ31034, Ras suppressor protein 1, RSP 1, RSP1, Rsu 1, RSU1



mouse placenta tissue were subjected to SDS PAGE followed by western blot with 11207-1-AP(RSU1 antibody) at dilution of 1:300



IP Result of anti-RSU1 (IP:11207-1-AP, 4µg; Detection:11207-1-AP 1:300) with human placenta tissue lysate 1520µg.

### Applications

Tested applications:	ELISA, WB, IP
Cited applications:	IHC, WB
Species specificity:	Human, Mouse; other species not tested.
Cited species:	Human
Calculated RSU1 MW:	32 kDa
Observed RSU1 MW:	32 kDa
Positive WB detected in	Mouse placenta tissue, human bladder tissue
Positive IP detected in	Human placenta tissue
Recommended dilution:	WB: 1:200-1:1000 IP: 1:200-1:1000

Application key: WB = Western blotting, IHC = Immunohistochemistry, IF = Immunofluorescence, IP = Immunoprecipitation

### Immunogen information

Immunogen:	Ag1693
GenBank accession number:	BC015644
Gene ID (NCBI):	6251
Full name:	Ras suppressor protein 1

### Product information

Purification method:	Antigen affinity purification
Storage:	PBS with 0.1% sodium azide and 50% glycerol pH 7.3. Store at -20°C.