

ERGIC2 Polyclonal Antibody

Catalog number: 11927-1-AP

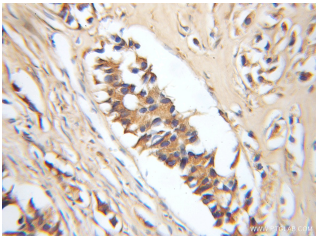
Size: 20 µg/150 µl

Source: Rabbit

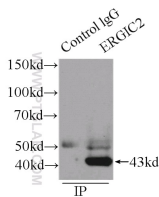
Isotype: IgG

Synonyms:

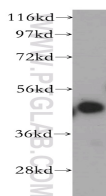
ERGIC2; cd002, CDA14, ERGIC and golgi 2, ERGIC2, Erv41, PTX1



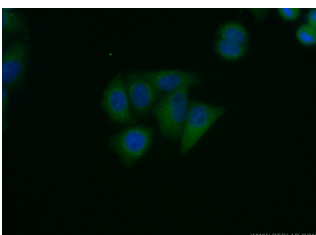
Immunohistochemical of paraffin-embedded human prostate cancer using 11927-1-AP (ERGIC2 antibody) at dilution of 1:50 (under 10x lens)



IP Result of anti-ERGIC2 (IP:11927-1-AP, 4µg; Detection:11927-1-AP 1:1000) with HepG2 cells lysate 2900µg.



HepG2 cells were subjected to SDS PAGE followed by western blot with 11927-1-AP (ERGIC2 antibody) at dilution of 1:500



Immunofluorescent analysis of (10% Formaldehyde) fixed

Background

ERGIC2, also named as Endoplasmic reticulum-Golgi intermediate compartment protein 2 or PTX1, is a 377 amino acid protein, which belongs to the ERGIC family. ERGIC2 is ubiquitously expressed in many tissues. ERGIC2 localizes in the endoplasmic reticulum-Golgi intermediate compartment membrane and may play a role in transport between endoplasmic reticulum and Golgi. ERGIC2 is involved in protein transportation, and participated in the elongation factor 1 alpha regulated mechanisms.

Applications

Tested applications:	ELISA, WB, IHC, IP, IF
Species specificity:	Human; other species not tested.
Calculated ERGIC2 MW:	377aa, 43 kDa
Observed ERGIC2 MW:	45-50 kDa
Positive WB detected in:	HepG2 cells
Positive IP detected in:	HepG2 cells
Positive IHC detected in:	Human prostate cancer tissue
Positive IF detected in:	HepG2 cells
Recommended dilution:	WB: 1:500-1:5000 IP: 1:500-1:5000 IHC: 1:20-1:200 IF: 1:50-1:500

Application key: WB = Western blotting, IHC = Immunohistochemistry, IF = Immunofluorescence, IP = Immunoprecipitation

Immunogen information

Immunogen:	Ag2603
GenBank accession number:	BC000887
Gene ID (NCBI):	51290
Full name:	ERGIC and golgi 2

Product information

Purification method:	Antigen affinity purification
Storage:	PBS with 0.1% sodium azide and 50% glycerol pH 7.3. Store at -20°C.

HepG2 cells using 11927-1-
AP(ERGIC2 Antibody) at
dilution of 1:50 and Alexa
Fluor 488-conjugated
AffiniPure Goat Anti-Rabbit
IgG(H+L)