

WBP1 Polyclonal Antibody

Catalog number: 11042-1-AP

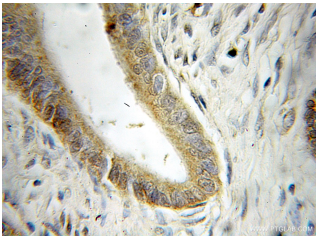
Size: 20 µg/150 µl

Source: Rabbit

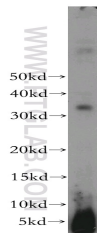
Isotype: IgG

Synonyms:

WBP1; WBP 1, WBP1, WW domain binding protein 1



Immunohistochemical of paraffin-embedded human pancreas cancer using 11042-1-AP (WBP1 antibody) at dilution of 1:50 (under 10x lens)



MCF7 cells were subjected to SDS PAGE followed by western blot with 11042-1-AP (WBP1 antibody) at dilution of 1:400

Background

WBP1 was originally identified in vitro as a protein that bound to the WW domain of Yes kinase-associated protein. The silencing of WBP1 with small hairpin RNAs caused partial, but significant suppression of ATF6-induced apoptosis. It is a type I transmembrane protein.

Applications

Tested applications:	ELISA, WB, IHC
Cited applications:	WB
Species specificity:	Human; other species not tested.
Cited species:	Mouse
Calculated WBP1 MW:	32 kDa
Observed WBP1 MW:	29-32 kDa
Positive WB detected in	MCF7 cells
Positive IHC detected in	Human pancreas cancer tissue
Recommended dilution:	WB: 1:200-1:1000 IHC: 1:20-1:200

Application key: WB = Western blotting, IHC = Immunohistochemistry, IF = Immunofluorescence, IP = Immunoprecipitation

Immunogen information

Immunogen:	Ag1478
GenBank accession number:	BC010012
Gene ID (NCBI):	23559
Full name:	WW domain binding protein 1

Product information

Purification method:	Antigen affinity purification
Storage:	PBS with 0.1% sodium azide and 50% glycerol pH 7.3. Store at -20°C.