

DGCR2 Polyclonal Antibody

Catalog number: 13705-1-AP

Size: 21 µg/150 µl

Source: Rabbit

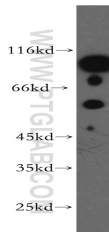
Isotype: IgG

Synonyms:

DGCR2; DGCR2, DGS C,

DKFZp686I1730, IDD,

KIAA0163, LAN, SEZ 12



HeLa cells were subjected to SDS PAGE followed by western blot with 13705-1-AP (DGCR2 antibody) at dilution of 1:300

Applications

Tested applications:	ELISA, WB
Species specificity:	Human, Mouse, Rat; other species not tested.
Calculated DGCR2 MW:	550aa, 61 kDa
Observed DGCR2 MW:	61-65 kDa
Positive WB detected in:	HeLa cells
Recommended dilution:	WB: 1:200-1:2000

Application key: WB = Western blotting, IHC = Immunohistochemistry, IF = Immunofluorescence, IP = Immunoprecipitation

Immunogen information

Immunogen:	Ag4629
GenBank accession number:	BC032430
Gene ID (NCBI):	9993
Full name:	DiGeorge syndrome critical region gene 2

Product information

Purification method:	Antigen affinity purification
Storage:	PBS with 0.02% sodium azide and 50% glycerol pH 7.3. Store at -20°C.