

EML2 Polyclonal Antibody

Catalog number: 13529-1-AP

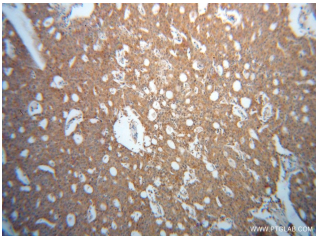
Size: 30 µg/150 µl

Source: Rabbit

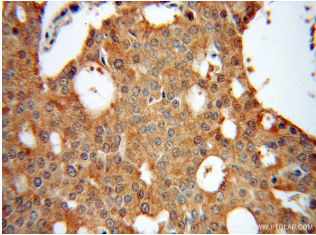
Isotype: IgG

Synonyms:

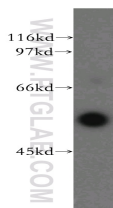
EML2; ELP70, EMAP 2,
EMAP2, EMAPL2, EML2,
HuEMAP 2



Immunohistochemical of paraffin-embedded human prostate cancer using 13529-1-AP(EML2 antibody) at dilution of 1:100 (under 10x lens)



Immunohistochemical of paraffin-embedded human prostate cancer using 13529-1-AP(EML2 antibody) at dilution of 1:100 (under 40x lens)



PC-3 cells were subjected to SDS PAGE followed by western blot with 13529-1-AP(EML2 antibody) at dilution of 1:400

Applications

Tested applications:	ELISA, WB, IHC
Species specificity:	Human, Mouse, Rat; other species not tested.
Calculated EML2 MW:	71 kDa
Observed EML2 MW:	55 kDa
Positive WB detected in	PC-3 cells
Positive IHC detected in	Human prostate cancer tissue
Recommended dilution:	WB: 1:500-1:5000 IHC: 1:20-1:200

Application key: WB = Western blotting, IHC = Immunohistochemistry, IF = Immunofluorescence, IP = Immunoprecipitation

Immunogen information

Immunogen:	Ag4423
GenBank accession number:	BC032630
Gene ID (NCBI):	24139
Full name:	Echinoderm microtubule associated protein like 2

Product information

Purification method:	Antigen affinity purification
Storage:	PBS with 0.02% sodium azide and 50% glycerol pH 7.3. Store at -20°C.